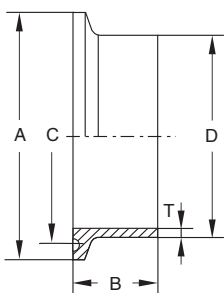




- ◆ Stainless Steel Sanitary Pipe Fitting
- ◆ Valve、Pump、Fluid Facility
- ◆ 不锈钢卫生级管件、阀门、泵、流体设备

端头 Clamp Ferrule

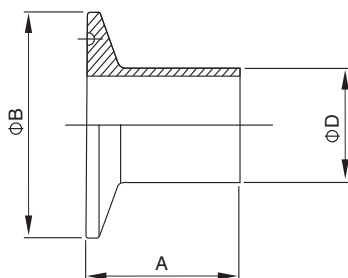
DIN DCQ01



Size	DxT	A	B	C
DN15	18x1.5	34	18	27.5
DN20	22x1.5	34	18	27.5
DN25	28x1.5	50.5	21.5	43.5
DN32	34x1.5	50.5	21.5	43.5
DN40	40x1.5	50.5	21.5	43.5
DN50	52x1.5	64	21.5	56.5
DN65	70x2.0	91	21.5	83.5
DN80	85x2.0	106	21.5	97.0
DN100	104x2.0	119	28	110.0
DN125	129x2.0	155	28	146.0
DN150	154x2.0	183	28	174.0

卡箍接头 Ferrule

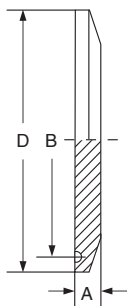
DIN DCQ02



Size	A	B	D
DN10	18	34	12
DN15	18	34	18
DN20	18	34	22
DN25	21.5	50.5	28
DN32	21.5	50.5	34
DN40	21.5	50.5	40
DN50	28	64	52
DN65	28	91	70
DN80	28	106	85
DN100	28	119	104
DN125	38	145	129
DN150	38	167	154

卡式端盖 Ferrule Cap

DIN DCQ03



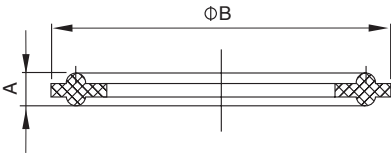
Size	D	A	B
DN15	34	6	27.5
DN20	34	6	27.5
DN25	50.5	6	43.5
DN32	50.5	6	43.5
DN40	50.5	6	43.5
DN50	64	6	56.5
DN65	91	6	83.5
DN80	106	6	97
DN100	119	8	110
DN125	155	11	146
DN150	183	11	174



- ◆ Stainless Steel Sanitary Pipe Fitting
- ◆ Valve、Pump、Fluid Facility
- ◆ 不锈钢卫生级管件、阀门、泵、流体设备

卡箍垫圈 Gasket for ferrule

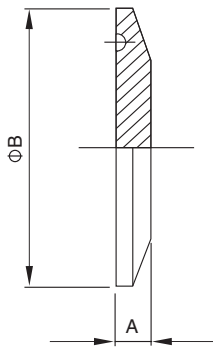
DIN | DCQ04



Size	A	B			
DN15	5.0	34.0			
DN20	5.0	34.0			
DN25	5.0	50.5			
DN32	5.5	50.5			
DN40	5.5	50.5			
DN50	5.5	64.0			
DN65	5.5	91.0			
DN80	5.5	106.0			
DN100	5.5	119.0			
DN125	5.5	145.0			
DN150	5.5	167.0			

卡箍堵头 End Cap

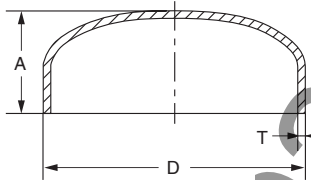
DIN | DCQ05



Size	A	B			
DN15	6.3	34.0			
DN20	6.3	34.0			
DN25	6.3	50.5			
DN32	6.3	50.5			
DN40	6.3	50.5			
DN50	6.3	64.0			
DN65	6.3	91.0			
DN80	6.3	106.0			
DN100	6.3	119.0			
DN125	11.1	145.0			
DN150	11.1	167.0			

管帽 Pipe Cap

DIN | DCQ06



Size	DxT	A			
DN25	28x1.5	11.0			
DN32	34x1.5	14.0			
DN40	40x1.5	14.0			
DN50	52x1.5	17.0			
DN65	70x2.0	22.0			
DN80	85x2.0	24.0			
DN100	104x2.0	28.0			
DN125	129x2.0	33.0			
DN150	154x2.0	38.0			
DN200	204x2.0	47.0			
DN250	254x2.0	50.0			

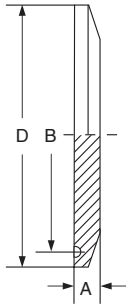


- ◆ Stainless Steel Sanitary Pipe Fitting
- ◆ Valve、Pump、Fluid Facility
- ◆ 不锈钢卫生级管件、阀门、泵、流体设备

卫生级卡式组件
SANITARY FERRULE

卡式端盖 Ferrule Cap

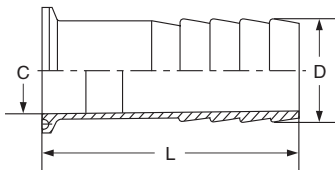
SMS | ICQ04



Size	D	A	B
1"	50.5	6	43.5
1.25"	50.5	6	43.5
1.5"	50.5	6	43.5
2"	64	6	56.5
2.5"	77.5	6	70.5
3"	91	6	83.5
3.5"	106	6	97
4"	119	8	110
4.5"	130	8	122
5.5"	155	11	146
6.5"	183	11	174

卡式软管接头 Adapter End Ferrule

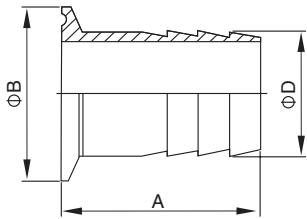
SMS | ICQ05



Size	D	L	C
1"	25.4	85	22.4
1.25"	31.8	90	28.8
1.5"	38.1	100	35.1
2"	50.8	125	47.8
2.5"	63.5	140	59.5
3"	76.1	160	72.1
3.5"	88.9	160	84.9
4"	101.6	170	97.6

卡箍皮管接头 Hose Coupling

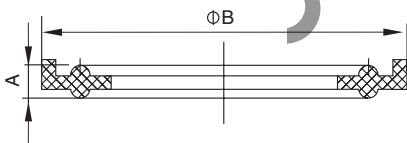
SMS | ICQ06



Size	A	B	D
1"	60	50.5	25.4
1.25"	65	50.5	31.8
1.5"	70	50.5	38.1
2"	75	64	50.8
2.5"	85	77.5	63.5
3"	90	91	76.3
3.5"	95	106	89
4"	100	119	101.6

卡箍垫圈 Gasket for ferrule

SMS | ICQ07



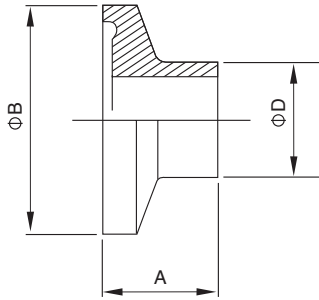
Size	A	B
1"	5.0	52.7
1.5"	5.0	52.7
2"	5.5	66.2
2.5"	5.5	79.7
3"	5.5	93.2
4"	5.5	121.2



- ◆ Stainless Steel Sanitary Pipe Fitting
- ◆ Valve、Pump、Fluid Facility
- ◆ 不锈钢卫生级管件、阀门、泵、流体设备

卡箍接头 Ferrule

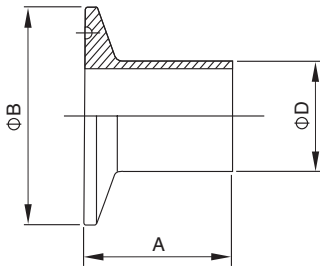
3A



	Size	A	B	D		
14WMP	0.5"	12.7	25.4	12.7		
	0.75"	12.7	25.4	19.1		
14MMP	0.5"	21.5	25.4	12.7		
	0.75"	21.5	25.4	19.1		
14AMP	0.5"	28.6	25.4	12.7		
	0.75"	28.6	25.4	19.1		
14AMP-AWF (BPE)	0.5"	44.5	25.4	12.7		
	0.75"	44.5	25.4	19.1		

卡箍接头 Ferrule

3A

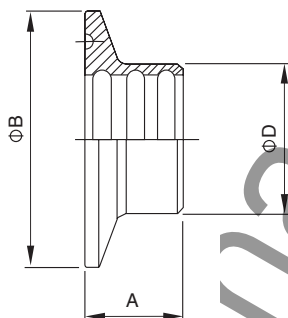


Size	B	D	S		
			14WMP	14MMP	14AMP
1"	50.5	25.4	12.7	21.5	28.6
1.5"	50.5	38.1	12.7	21.5	28.6
2"	64	50.8	12.7	21.5	28.6
2.5"	77.5	63.5	12.7	21.5	28.6
3"	91	76.2	12.7	21.5	28.6
4"	119	101.6	15.8	21.5	28.6
6"	167	152.4	22.2	21.5	38.1
8"	217.7	203.2	22.2	21.5	38.1
10"	268.5	254	22.2	21.5	38.1

扩展式接头 Expanded Ferrule

3A

14RMP



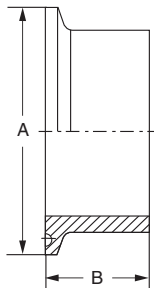
Size	A	B	D		
1"	19.1	50.5	29.5		
1.5"	28.6	50.5	42.6		
2"	33.3	64	55.7		
2.5"	34.9	77.5	68.8		
3"	36.5	91	81.9		
4"	38.1	119	108.1		



- ◆ Stainless Steel Sanitary Pipe Fitting
- ◆ Valve、Pump、Fluid Facility
- ◆ 不锈钢卫生级管件、阀门、泵、流体设备

端头(加厚型) Welding Ferrule (Heavy)

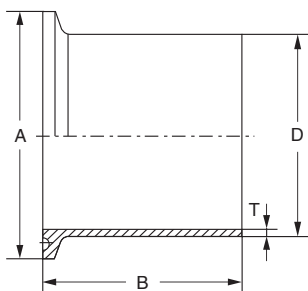
3A | 14MPW



Size	A(inch)	B(inch)			
1"	1 63/64	1 5/8			
1.5"	1 63/64	1 5/8			
2"	2 33/64	1 3/4			
2.5"	2 3/64	1 3/4			
3"	3 37/64	1 13/16			
4"	4 11/18	2 1/8			

端头(加长型) Ferrule (Long)

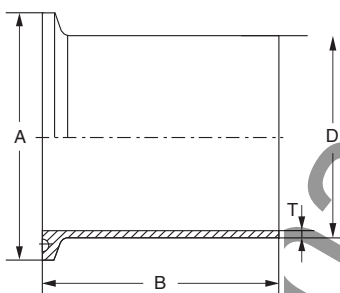
3A | 14WLMP



Size	T(mm)	A(inch)	B(inch)		
1"	1.65	1 63/64	3		
1.5"	1.65	1 63/64	3		
2"	1.65	2 33/64	3		
2.5"	1.65	2 3/64	3		
3"	1.65	3 37/64	4		
4"	2.11	4 11/18	4		

罐用加长卡式接头 Tygon Hose Adapter

3A | 14MPHT



Size	T(mm)	A(inch)	B(inch)		
0.5"	1.65	1	1 3/4		
0.75"	1.65	1	1 3/4		
1"	1.65	1 63/64	4 1/2		
1.5"	1.65	1 63/64	4 1/2		
2"	1.65	2 33/64	4 1/2		
2.5"	1.65	2 3/64	4 1/2		
3"	1.65	3 37/64	4 1/2		
4"	2.11	4 11/18	4 5/8		

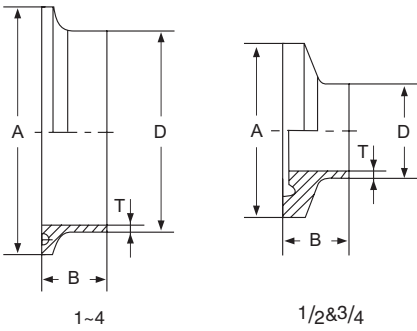


- ◆ Stainless Steel Sanitary Pipe Fitting
- ◆ Valve、Pump、Fluid Facility
- ◆ 不锈钢卫生级管件、阀门、泵、流体设备

卫生级卡式组件
 SANITARY FERRULE

端头(短型) Short Welding Ferrule

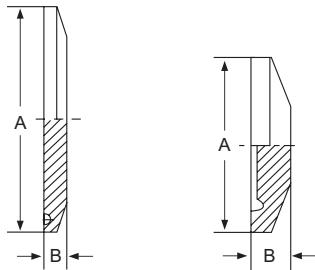
BPE | S14WMP



Size	T(mm)	A(inch)	B(inch)
0.5"	1.65	1	1/2
0.75"	1.65	1	1/2
1"	1.65	1 63/64	1/2
1.5"	1.65	1 63/64	1/2
2"	1.65	2 33/64	1/2
2.5"	1.65	2 3/64	1/2
3"	1.65	3 37/64	1/2
4"	2.11	4 11/16	5/8
6"	2.80	6 9/16	7/8

卡式端盖 Ferrule Cap

BPE | S16AMP



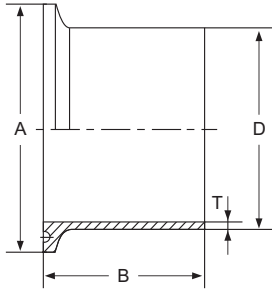
Size	A(inch)	B(inch)
0.5"	1	2/11
0.75"	1	2/11
1"	1 63/64	1/4
1.5"	1 63/64	1/4
2"	2 33/64	1/4
2.5"	2 3/64	1/4
3"	3 37/64	1/4
4"	4 11/16	1/4
6"	6 9/16	3/7



- ◆ Stainless Steel Sanitary Pipe Fitting
- ◆ Valve、Pump、Fluid Facility
- ◆ 不锈钢卫生级管件、阀门、泵、流体设备

端头(加长盖) Welding Ferrule(Long)

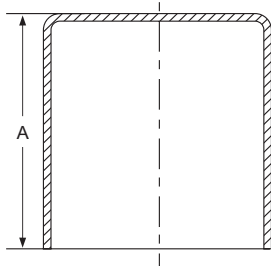
BPE | S14MPW



Size	T(mm)	A(inch)	B(inch)			
0.5"	1.65	1	1 3/4			
0.75"	1.65	1	1 3/4			
1"	1.65	1 63/64	1 3/4			
1.5"	1.65	1 63/64	1 3/4			
2"	1.65	2 33/64	2 1/4			
2.5"	1.65	2 3/64	2 1/4			
3"	1.65	3 37/64	2 1/4			
4"	2.11	4 11/16	2 1/4			
6"	2.80	6 9/16	3			

端盖 Welding Cap

BPE | S16AWF

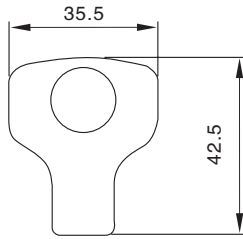


Size	A(inch)					
0.5"	1/2					
0.75"	1/2					
1"	1/2					
1.5"	1/2					
2"	1/2					
2.5"	1/2					
3"	1/2					
4"	2					
6"	2 1/2					

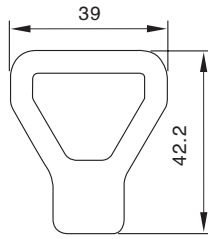


- ◆ Stainless Steel Sanitary Pipe Fitting
- ◆ Valve、Pump、Fluid Facility
- ◆ 不锈钢卫生级管件、阀门、泵、流体设备

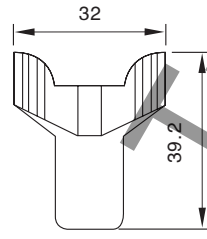
卡箍螺母 Clamp Nut



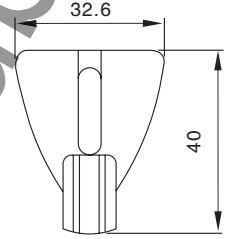
No.1



No.2

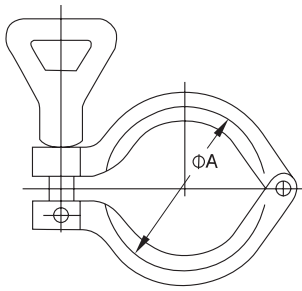


No.3



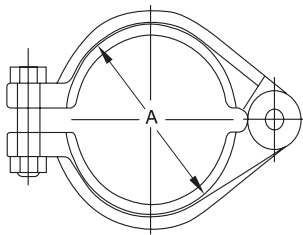
No.4

卡箍 Clamp 13MHHM



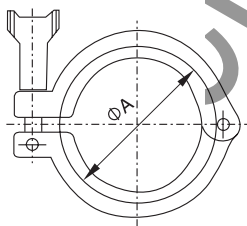
Size	A(mm)				
0.5"&0.75"	28.2				
1"&1.5"	53.9				
2"	67.41				
2.5"	80.9				
3"	94.41				
4"	122.43				
6"	170.1				

卡箍 Clamp 13I/13IU



Size	A(mm)				
1.5"	53.95				
2"	71.42				
2.5"	88.9				
3"	103.12				
4"	126.95				

卡箍 Clamp 13IS



Size	A(mm)				
1"&1.5"	53.95				
2"	71.42				
2.5"	88.9				
3"	103.12				
4"	126.95				

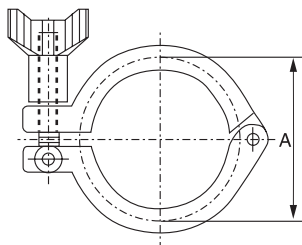
SANITARY CLAMP
卫生级卡箍



- ◆ Stainless Steel Sanitary Pipe Fitting
- ◆ Valve、Pump、Fluid Facility
- ◆ 不锈钢卫生级管件、阀门、泵、流体设备

卡箍 Clamp

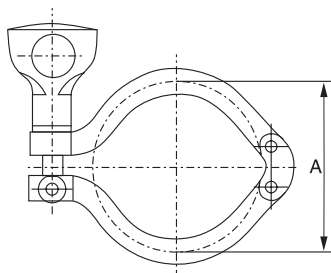
P13MHHM



Size	A(mm)				
0.5" & 0.75"	28.2				
1" & 1.5"	53.9				
2"	67.41				
2.5"	80.9				
3"	94.41				
4"	122.43				
6"	170.1				

卡箍 Clamp

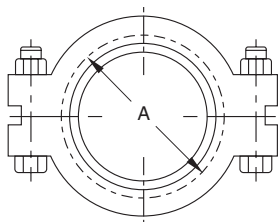
PW13MHHM



Size	A(mm)				
1" & 1.5"	53.90				
2"	67.41				
2.5"	80.90				
3"	94.41				
4"	122.43				

卡箍 Clamp

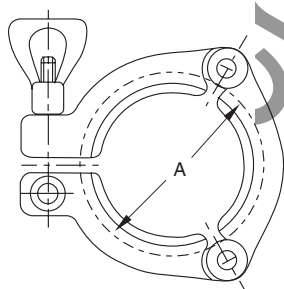
13MHP



Size	A(mm)				
0.5" & 0.75"	26.70				
1"	52.40				
1.5"	52.40				
2"	65.90				
2.5"	79.50				
3"	93.85				
4"	120.95				
6"	170.10				

卡箍 Clamp

P13MHHS



Size	A(mm)				
1"	54.0				
1.5"	54.0				
2"	67.7				
2.5"	80.8				
3"	94.3				
4"	122.8				