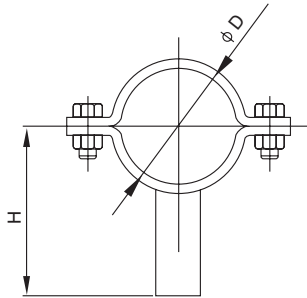




- ◆ Stainless Steel Sanitary Pipe Fitting
- ◆ Valve、Pump、Fluid Facility
- ◆ 不锈钢卫生级管件、阀门、泵、流体设备

管支架 Pipe holder

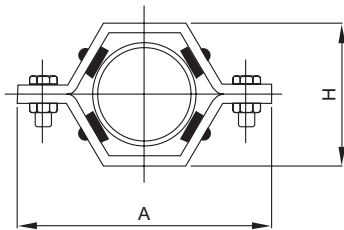
SPHS01



Size	H	D			
1"	61.0	25.4			
1.25"	64.0	31.8			
1.5"	67.0	38.1			
2"	74.0	50.8			
2.5"	80.0	63.5			
3"	86.0	76.2			
3.5"	93.0	89.0			
4"	100.0	101.6			
4.25"	102.0	108.0			
4.5"	105.0	114.0			
5"	115.0	133.0			
6"	128.0	159.0			

六角型管支架 Hexagon Pipe holder

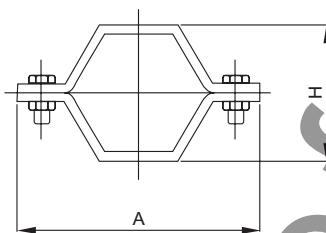
SPHS02



Size	A	H			
1"	87.0	36.8			
1.5"	101.6	53.9			
2"	114.3	63.5			
2.5"	120.6	79.4			
3"	139.7	95.2			
4"	171.4	120.6			

六角型管支架 Hexagon Pipe holder

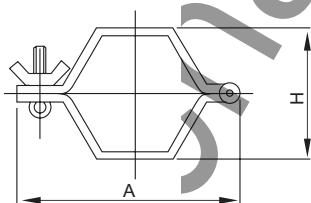
SPHS03



Size	A	H			
1"	87.0	36.8			
1.5"	101.6	53.9			
2"	114.3	63.5			
2.5"	120.6	79.4			
3"	139.7	95.2			
4"	171.4	120.6			

六角型管支架 Hexagon Pipe holder

SPHS04



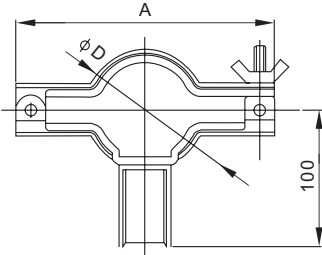
Size	A	H			
1"	87.0	36.8			
1.5"	101.6	53.9			
2"	114.3	63.5			
2.5"	120.6	79.4			
3"	139.7	95.2			
4"	171.4	120.6			



- ◆ Stainless Steel Sanitary Pipe Fitting
- ◆ Valve、Pump、Fluid Facility
- ◆ 不锈钢卫生级管件、阀门、泵、流体设备

圆型管支架带柄 Round pipe holder with handle

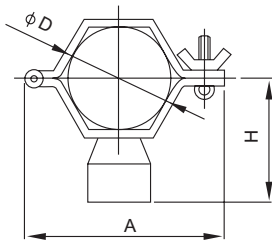
SPHS05



Size	H	D				
1"	66.0	25.4				
1.5"	76.0	38.1				
2"	90.0	50.6				
2.5"	105.0	63.5				
3"	120.0	76.3				
4"	146.0	101.6				

六角型管支架带柄 Hexagon pipe holder with handle

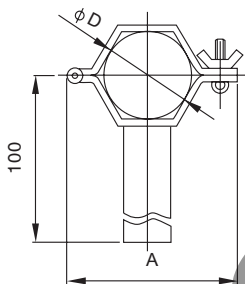
SPHS06



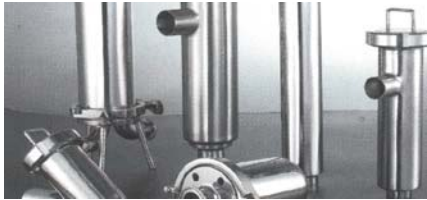
Size	A	D	H			
1"	61.0	25.0	45.0			
1.5"	76.0	38.0	51.5			
2"	90.0	51.0	58.0			
2.5"	106.0	63.5	64.0			
3"	120.0	76.0	70.5			
4"	146.0	101.6	83.0			

六角型管支架带柄 Hexagon pipe holder with handle

SPHS07



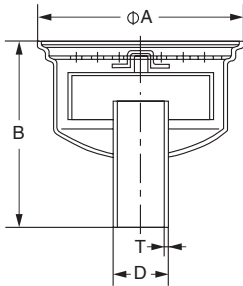
Size	A	D				
1"	61.0	25.0				
1.5"	76.0	38.0				
2"	90.0	51.0				
2.5"	106.0	63.5				
3"	120.0	76.0				
4"	146.0	101.6				



- ◆ Stainless Steel Sanitary Pipe Fitting
- ◆ Valve、Pump、Fluid Facility
- ◆ 不锈钢卫生级管件、阀门、泵、流体设备

圆形地漏 Round Floor Drain

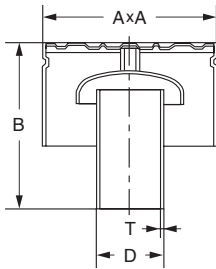
DIN | FD01



Size	DxT	A	B		
DN50	52x1.5	190	170		
DN65	70x2.0	190	170		
DN80	85x2.0	190	170		
DN100	104x2.0	190	170		
2"	50.8x1.5	190	170		
2.5"	63.5x2.0	190	170		
3"	76.1x2.0	190	170		
3.5"	88.9x2.0	190	170		
4"	101.6x2.0	190	170		

方形地漏 Square Floor Drain

DIN | FD02



Size	DxT	A	B		
DN50	52x1.5	190	170		
DN65	70x2.0	190	170		
DN80	85x2.0	190	170		
DN100	104x2.0	190	170		
2"	50.8x1.5	190	170		
2.5"	63.5x2.0	190	170		
3"	76.1x2.0	190	170		
3.5"	88.9x2.0	190	170		
4"	101.6x2.0	190	170		