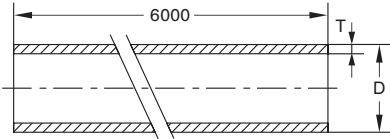




- ◆ Stainless Steel Sanitary Pipe Fitting
- ◆ Valve、Pump、Fluid Facility
- ◆ 不锈钢卫生级管件、阀门、泵、流体设备

卫生直管 Sanitary Pipe

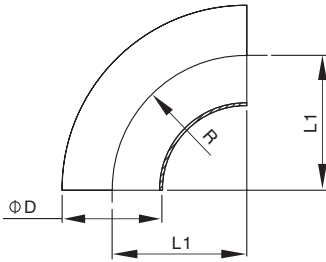
ISO IW01



Size	DxT	A	B	R
1"	25.4x1.5			
1.25"	31.8x1.5			
1.5"	38.1x1.5			
2"	50.8x1.5			
2.5"	63.5x2.0			
3"	76.1x2.0			
3.5"	88.9x2.0			
4"	101.6x2.0			
4.5"	114.3x2.0			
5"	127.0x2.0			
6"	152.4x3.0			

焊接式弯头(90°) Welded Elbow

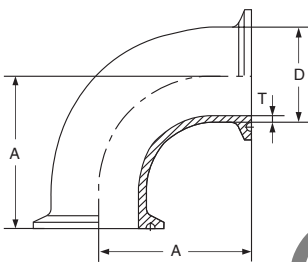
ISO IW02



Size	DxT	L1	R
1"	25.4x1.5	33.5	33.5
1.25"	31.8x1.5	38.0	38.0
1.5"	38.1x1.5	48.5	48.5
2"	50.8x1.5	60.5	60.5
2.5"	63.5x2.0	83.5	83.5
3"	76.1x2.0	88.5	88.5
3.5"	88.9x2.0	103.5	103.5
4"	101.6x2.0	127.0	127.0
4.5"	114.3x2.0	152.4	152.4
5"	133x2.0	190.5	190.5
6"	159x3.0	228.6	228.6

卡箍式弯头(90°) Clamped Elbow

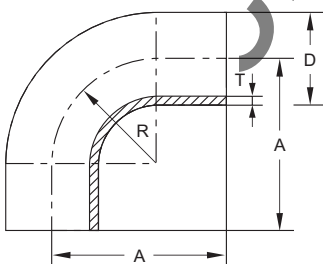
ISO IC01



Size	DxT	A	B	C
1"	25.4x1.5	55.0		
1.25"	31.8x1.5	59.5		
1.5"	38.1x1.5	70.0		
2"	50.8x1.5	82.0		
2.5"	63.5x2.0	105.0		
3"	76.1x2.0	110.0		
3.5"	88.9x2.0	125.0		
4"	101.6x2.0	155.0		

焊式加长弯头(90°) Elbow Long

ISO IW03



Size	DxT	A	B	R
1"	25.4x1.5	54		33.5
1.25"	31.8x1.5	60		38.0
1.5"	38.1x1.5	73		48.5
2"	50.8x1.5	85		60.5
2.5"	63.5x2.0	112		83.5
3"	76.1x2.0	116		88.5
3.5"	88.9x2.0	130		103.5
4"	101.6x2.0	160		127.0

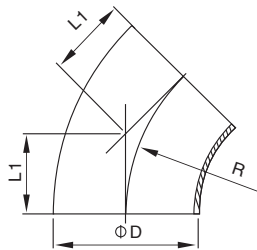


- ◆ Stainless Steel Sanitary Pipe Fitting
- ◆ Valve、Pump、Fluid Facility
- ◆ 不锈钢卫生级管件、阀门、泵、流体设备

SANITARY PIPE FITTINGS 卫生级管件

### 焊式短弯头(45°) Elbow short

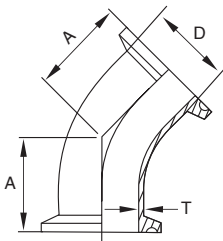
ISO | IW04



Size	DxT	L1	B	R
1"	25.4x1.5	14		33.5
1.25"	31.8x1.5	16		38.0
1.5"	38.1x1.5	20		48.5
2"	50.8x1.5	25		60.5
2.5"	63.5x2.0	35		83.5
3"	76.1x2.0	37		88.5
3.5"	88.9x2.0	43		103.5
4"	101.6x2.0	52.5		127.0
4.5"	114.3x2.0	63		152.4
5"	127.0x2.0	79		190.5
6"	152.4x2.0	94.7		228.6

### 卡箍式弯头(45°) Clamped Elbow

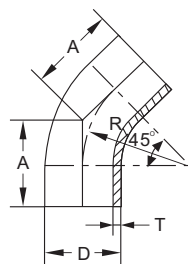
ISO | IC02



Size	DxT	A	B
1"	25.4x1.5	35.5	
1.25"	31.8x1.5	37.5	
1.5"	38.1x1.5	41.5	
2"	50.8x1.5	46.5	
2.5"	63.5x2.0	56.5	
3"	76.1x2.0	58.5	
3.5"	88.9x2.0	64.5	
4"	101.6x2.0	80.5	

### 焊式加长弯头(45°) Elbow Long

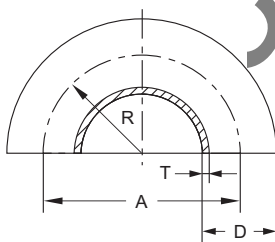
ISO | IW05



Size	DxT	A	B	R
1"	25.4x1.5	35		33.5
1.25"	31.8x1.5	38		38.0
1.5"	38.1x1.5	45		48.5
2"	50.8x1.5	50		60.5
2.5"	63.5x2.0	64		83.5
3"	76.1x2.0	70		88.5
3.5"	88.9x2.0	75		103.5
4"	101.6x2.0	86		127.0

### 焊式弯头(180°) Elbow

ISO | IW06



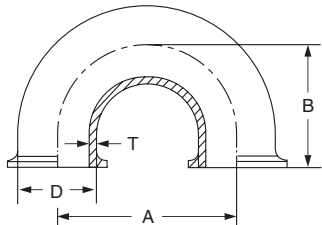
Size	DxT	A	B	R
1"	25.4x1.5	67		33.5
1.5"	38.1x1.5	97		48.5
2"	50.8x1.5	121		60.5
2.5"	63.5x2.0	167		83.5
3"	76.1x2.0	177		88.5
4"	101.6x2.0	254		127.0



- ◆ Stainless Steel Sanitary Pipe Fitting
- ◆ Valve、Pump、Fluid Facility
- ◆ 不锈钢卫生级管件、阀门、泵、流体设备

卡式弯头(180°) Clamped Elbow

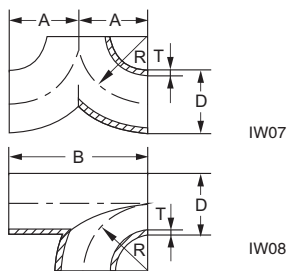
ISO IC03



Size	DxT	A	B	R
1"	25.4x1.5	76.2	59.6	
1.5"	38.1x1.5	114.3	78.7	
2"	50.8x1.5	152.4	97.7	
2.5"	63.5x2.0	190.6	116.8	
3"	76.1x2.0	228.6	135.8	
4"	101.6x2.0	304.8	180.4	

焊式R三通 R-Tee

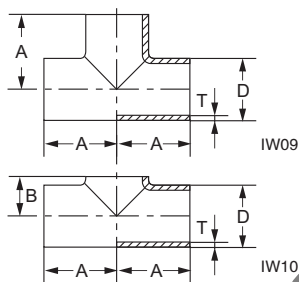
ISO IW07 / IW08



Size	DxT	A	B	R
1.5"	38.1x1.5	48.5	97	48.5
2"	50.8x1.5	60.5	121	60.5
2.5"	63.5x2.0	83.5	167	83.5
3"	76.1x2.0	88.5	177	88.5
3.5"	88.9x2.1	103.5	207	103.5
4"	101.6x2.0	127	254	127

焊式等径三通 Tee

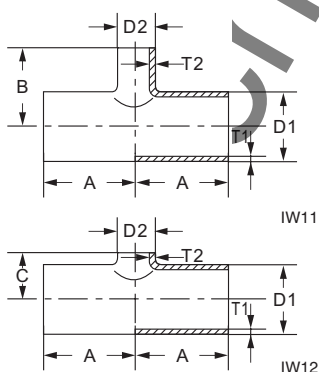
ISO IW09 / IW10



Size	DxT	A	B	R
1"	25.4x1.5	33.5	16	
1.25"	31.8x1.5	38	19	
1.5"	38.1x1.5	48.5	22	
2"	50.8x1.5	60.5	28.5	
2.5"	63.5x2.0	83.5	35	
3"	76.1x2.0	88.5	41	
3.5"	88.9x2.0	103.5	47.5	
4"	101.6x2.0	127	54	

焊式异径三通 Reducing Tee

ISO IW11 / IW12



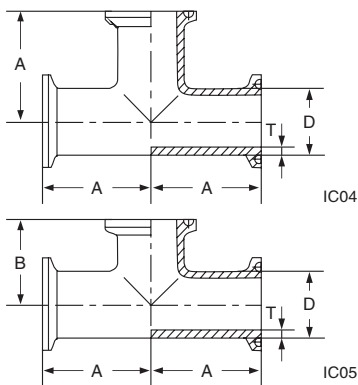
Size	D <sub>1</sub> xT <sub>1</sub>	D <sub>2</sub> xT <sub>2</sub>	A	B	C
1.5"x1"	38.1x1.5	25.4x1.5	48.5	44.5	22
2"x1.5"	50.8x1.5	38.1x1.5	60.5	64	28.5
2"x1"	50.8x1.5	25.4x1.5	60.5	51	28.5
2.5"x2"	63.5x2.0	50.8x1.5	83.5	82	35
2.5"x1.5"	63.5x2.0	38.1x1.5	83.5	70	35
2.5"x1"	63.5x2.0	25.4x1.5	83.5	57	35
3"x2.5"	76.1x2.0	63.5x2.0	88.5	88.5	41
3"x2"	76.1x2.0	50.8x1.5	88.5	88.5	41
3"x1.5"	76.1x2.0	38.1x1.5	88.5	76.5	41
4"x3"	101.6x2.0	76.1x2.0	127	101	54
4"x2.5"	101.6x2.0	63.5x2.0	127	101	54
4"x2"	101.6x2.0	50.8x1.5	127	101	54



- ◆ Stainless Steel Sanitary Pipe Fitting
- ◆ Valve、Pump、Fluid Facility
- ◆ 不锈钢卫生级管件、阀门、泵、流体设备

### 卡式等径三通 Clamped Tee

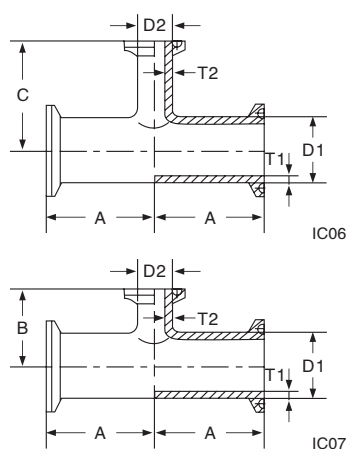
ISO | IC04 / IC05



Size	DxT	A	B	C
1"	25.4x1.5	55	37.5	
1.25"	31.8x1.5	59.5	40.5	
1.5"	38.1x1.5	70	43.5	
2"	50.8x1.5	82	50	
2.5"	63.5x2.0	105	56.5	
3"	76.1x2.0	110	62.5	
3.5"	88.9x2.0	125	69	
4"	101.6x2.0	155	82	

### 卡式变径三通 Clamped Tee

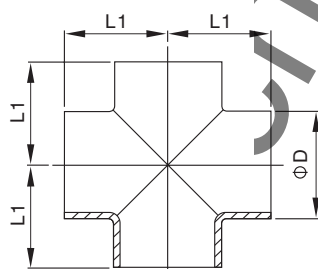
ISO | IC06 / IC07



Size	D <sub>1</sub> xT <sub>1</sub>	D <sub>2</sub> xT <sub>2</sub>	A	B	C
1.5"x1"	38.1x1.5	25.4x1.5	70	43.5	66
2"x1.5"	50.8x1.5	38.1x1.5	82	50	85
2"x1"	50.8x1.5	25.4x1.5	82	50	72.5
2.5"x2"	63.5x2.0	50.8x1.5	105	56.5	103.5
2.5"x1.5"	63.5x2.0	38.1x1.5	105	56.5	91.5
2.5"x1"	63.5x2.0	25.4x1.5	105	56.5	78.5
3"x2.5"	76.1x2.0	63.5x2.0	110	62.5	110
3"x2"	76.1x2.0	50.8x1.5	110	62.5	110
3"x1.5"	76.1x2.0	38.1x1.5	110	62.5	98
4"x3"	101.6x2.0	76.1x2.0	155	75.5	122.5
4"x2.5"	101.6x2.0	63.5x2.0	155	75.5	122.5
4"x2"	101.6x2.0	50.8x1.5	155	75.5	122.5

### 焊接式四通 Welded Cross

ISO | IW13



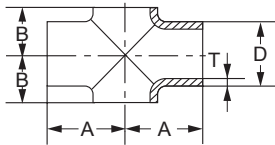
Size	DxT	L1	B	C
1"	25.4x1.5	33.5		
1.25"	31.8x1.5	38.0		
1.5"	38.1x1.5	48.5		
2"	50.8x1.5	60.5		
2.5"	63.5x2.0	83.5		
3"	76.1x2.0	88.5		
3.5"	88.9x2.0	103.5		
4"	101.6x2.0	127.0		
4.5"	114.3x2.0	152.4		



- ◆ Stainless Steel Sanitary Pipe Fitting
- ◆ Valve、Pump、Fluid Facility
- ◆ 不锈钢卫生级管件、阀门、泵、流体设备

### 焊接式四通 Welded Cross

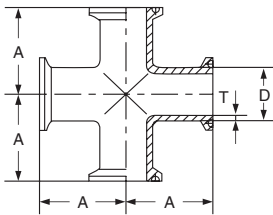
ISO IW14



Size	DxT	A	B	C
1"	25.4x1.5	33.5	16	
1.25"	31.8x1.5	38.0	19	
1.5"	38.1x1.5	48.5	22	
2"	50.8x1.5	60.5	28.5	
2.5"	63.5x2.0	83.5	35	
3"	76.1x2.0	88.5	41	
3.5"	88.9x2.0	103.5	47.5	
4"	101.6x2.0	127.0	54	
4.5"	114.3x2.0	152.4	60	

### 卡式四通 Clamped Cross

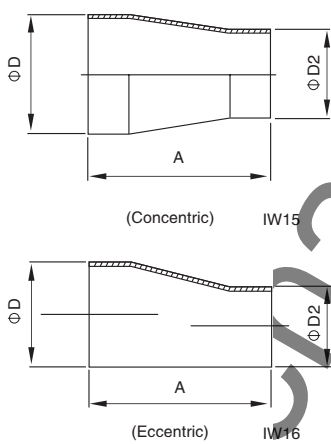
ISO IC08



Size	DxT	A	B	C
1"	25.4x1.5	55		
1.25"	31.8x1.5	59.5		
1.5"	38.1x1.5	70		
2"	50.8x1.5	82		
2.5"	63.5x2.0	105		
3"	76.1x2.0	110		
3.5"	88.9x2.0	125		
4"	101.6x2.0	155		

### 焊接式大小头 Welded Reducer

ISO IW15 / IW16



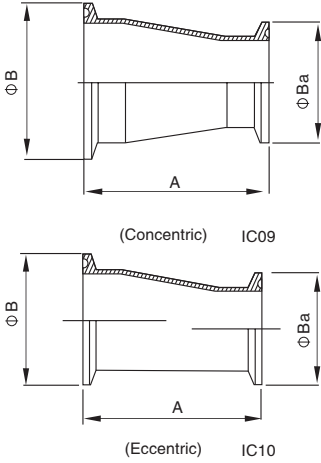
Size	A	D	D2
1.0"/0.75"	38	38.1	25.4
1.25"/1.0"	50	50.8	25.4
1.5"/1.25"	50	50.8	38.1
1.5"/1.0"	50	63.5	25.4
2.0"/1.5"	67	63.5	38.1
2.0"/1.25"	67	63.5	50.8
2.0"/1.0"	67	76.2	25.4
2.5"/2.0"	67	76.2	38.1
2.5"/1.5"	67	76.2	50.8
2.5"/1.0"	67	76.2	63.5
3.0"/2.5"	67	101.6	25.4
3.0"/2.0"	67	101.6	38.1
3.0"/1.5"	67	101.6	50.8
3.5"/3.0"	76	101.6	63.5
3.5"/2.5"	67	101.6	76.2
3.5"/2.0"	67	101.6	25.4
4.0"/3.5"	87	101.6	38.1
4.0"/3.0"	87	101.6	50.8
4.0"/2.5"	87	101.6	63.5
4.0"/2.0"	87	101.6	76.2



- ◆ Stainless Steel Sanitary Pipe Fitting
- ◆ Valve、Pump、Fluid Facility
- ◆ 不锈钢卫生级管件、阀门、泵、流体设备

### 卡箍式大小头 Clamped Reducer

ISO IC09 / IC10



Size	A	B	Ba		
1.0"/0.75"	64	50.5	34.0		
1.25"/1.0"	76	50.5	50.5		
1.5"/1.25"	76	50.5	50.5		
1.5"/1.0"	76	50.5	50.5		
2.0"/1.5"	93	64.0	50.5		
2.0"/1.25"	93	64.0	50.5		
2.0"/1.0"	93	64.0	50.5		
2.5"/2.0"	93	77.5	64.0		
2.5"/1.5"	93	77.5	50.5		
2.5"/1.0"	93	77.5	50.5		
3.0"/2.5"	93	91.0	77.5		
3.0"/2.0"	93	91.0	64.0		
3.0"/1.5"	93	91.0	50.5		
3.5"/3.0"	93	106.0	91.0		
3.5"/2.5"	93	106.0	77.5		
3.5"/2.0"	93	106.0	64.0		
4.0"/3.5"	118	119.0	106.0		
4.0"/3.0"	118	119.0	91.0		
4.0"/2.5"	118	119.0	77.5		
4.0"/2.0"	118	119.0	64.0		

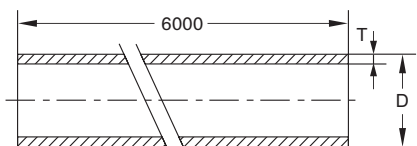
maofei valve



- ◆ Stainless Steel Sanitary Pipe Fitting
- ◆ Valve、Pump、Fluid Facility
- ◆ 不锈钢卫生级管件、阀门、泵、流体设备

### 卫生直管 Sanitary Pipe

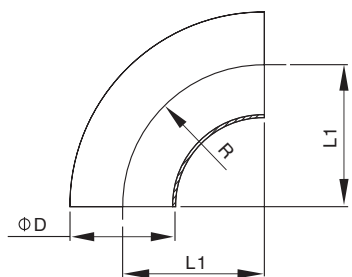
DIN DW01



Size	DxT	A	R		
DN10	12x1.5				
DN15	18x1.5				
DN20	22x1.5				
DN25	28x1.5				
DN32	34x1.5				
DN40	40x1.5				
DN50	52x1.5				
DN65	70x2.0				
DN80	85x2.0				
DN100	104x2.0				
DN125	129x2.0				
DN150	154x2.0				
DN200	204x2.0				
DN250	254x2.0				

### 焊接式短弯头(90°) Welded Elbow

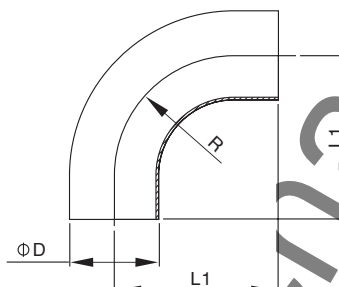
DIN DW02



Size	DxT	L1	R		
DN10	12x1.5	26.0	26.0		
DN15	18x1.5	35.0	35.0		
DN20	22x1.5	40.0	40.0		
DN25	28x1.5	50.0	50.0		
DN32	34x1.5	55.0	55.0		
DN40	40x1.5	60.0	60.0		
DN50	52x1.5	70.0	70.0		
DN65	70x2.0	80.0	80.0		
DN80	85x2.0	90.0	90.0		
DN100	104x2.0	100.0	100.0		
DN125	129x2.0	187.5	187.5		
DN150	154x2.0	225.0	225.0		

### 加直端焊接式弯头(90°) Elbow Long

DIN DW03



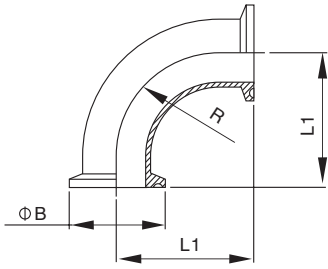
Size	DxT	L1	R		
DN10	12x1.5	38.0	26.0		
DN15	18x1.5	47.0	35.0		
DN20	22x1.5	52.0	40.0		
DN25	28x1.5	70.0	50.0		
DN32	34x1.5	78.0	55.0		
DN40	40x1.5	85.0	60.0		
DN50	52x1.5	97.0	70.0		
DN65	70x2.0	110.0	80.0		
DN80	85x2.0	118.0	90.0		
DN100	104x2.0	140.0	100.0		



- ◆ Stainless Steel Sanitary Pipe Fitting
- ◆ Valve、Pump、Fluid Facility
- ◆ 不锈钢卫生级管件、阀门、泵、流体设备

### 卡箍式弯头(90°) Clamped Elbow

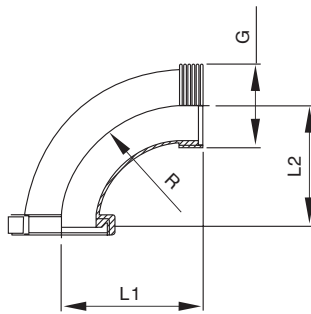
DIN | DC01



Size	L1	R	B		
DN15	53.0	34.0	35.0		
DN20	58.0	34.0	40.0		
DN25	71.0	50.5	50.0		
DN32	76.5	50.5	55.0		
DN40	81.5	50.5	60.0		
DN50	91.5	64.0	70.0		
DN65	108.5	91.0	80.0		
DN80	118.0	106.0	90.0		
DN100	128.0	119.0	100.0		

### 活接式弯头(90°) Union-type Elbow

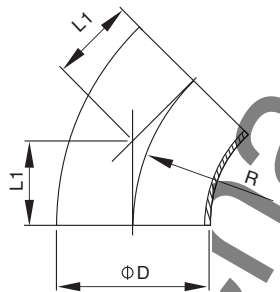
DIN | DQ01



Size	L1	L2	G	R		
DN20	60.0	55.0	RD44x1/6	40.0		
DN25	71.0	67.0	RD52x1/6	50.0		
DN32	76.0	72.0	RD58x1/6	55.0		
DN40	81.0	77.0	RD65x1/6	60.0		
DN50	91.0	87.0	RD78x1/6	70.0		
DN65	103.0	97.0	RD95x1/6	80.0		
DN80	116.0	110.0	RD110x1/4	90.0		
DN100	128.0	124.0	RD130x1/4	100.0		

### 焊接式弯头(45°) Welded Elbow

DIN | DW04



Size	DxT	L1	R		
DN10	12x1.5	10.7	26.0		
DN15	18x1.5	14.5	35.0		
DN20	22x1.5	16.5	40.0		
DN25	28x1.5	20.7	50.0		
DN32	34x1.5	22.8	55.0		
DN40	40x1.5	24.8	60.0		
DN50	52x1.5	29.0	70.0		
DN65	70x2.0	33.2	80.0		
DN80	85x2.0	37.3	90.0		
DN100	104x2.0	41.5	100.0		
DN125	129x2.0	77.5	187.5		
DN150	154x2.0	93.2	225.0		

SANITARY PIPE FITTINGS 卫生级管件



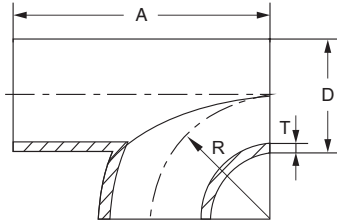




- ◆ Stainless Steel Sanitary Pipe Fitting
- ◆ Valve、Pump、Fluid Facility
- ◆ 不锈钢卫生级管件、阀门、泵、流体设备

### 焊式R三通 R-Tee

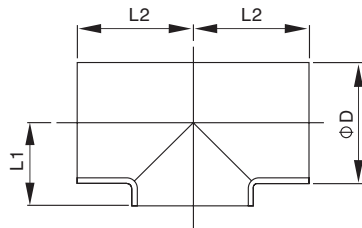
DIN DW07



Size	DxT	A	R
DN10	12x1.5	52.0	26.0
DN15	18x1.5	70.0	35.0
DN20	22x1.5	80.0	40.0
DN25	28x1.5	100.0	50.0
DN32	34x1.5	110.0	55.0
DN40	40x1.5	120.0	60.0
DN50	52x1.5	140.0	70.0
DN65	70x2.0	160.0	80.0
DN80	85x2.0	180.0	90.0
DN100	104x2.0	200.0	100.0
DN125	129x2.0	375.0	187.5
DN150	154x2.0	450.0	225.0
DN200	204x2.0	600.0	300.0
DN250	254x2.0	750.0	375.0

### 短型焊接式三通 Short welded Tee

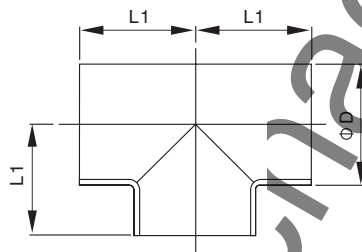
DIN DW08



Size	DxT	L1	L2
DN10	12x1.5	7.5	26.0
DN15	18x1.5	10.5	35.0
DN20	22x1.5	12.5	40.0
DN25	28x1.5	16.0	50.0
DN32	34x1.5	19.5	55.0
DN40	40x1.5	22.5	60.0
DN50	52x1.5	30.0	70.0
DN65	70x2.0	39.5	80.0
DN80	85x2.0	47.5	90.0
DN100	104x2.0	58.0	100.0
DN125	129x2.0	70.5	187.5
DN150	154x2.0	83.0	225.0

### 长型焊接式三通 Long welded Tee

DIN DW09



Size	DxT	L1
DN10	12x1.5	26.0
DN15	18x1.5	35.0
DN20	22x1.5	40.0
DN25	28x1.5	50.0
DN32	34x1.5	55.0
DN40	40x1.5	60.0
DN50	52x1.5	70.0
DN65	70x2.0	80.0
DN80	85x2.0	90.0
DN100	104x2.0	100.0
DN125	129x2.0	187.5
DN150	154x2.0	225.0

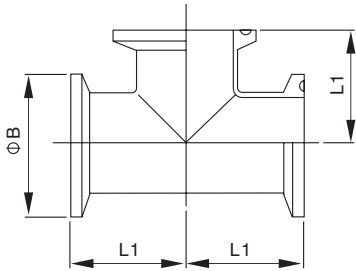
SANITARY PIPE FITTINGS 卫生级管件



- ◆ Stainless Steel Sanitary Pipe Fitting
- ◆ Valve、Pump、Fluid Facility
- ◆ 不锈钢卫生级管件、阀门、泵、流体设备

卡箍式三通 Clamped Tee

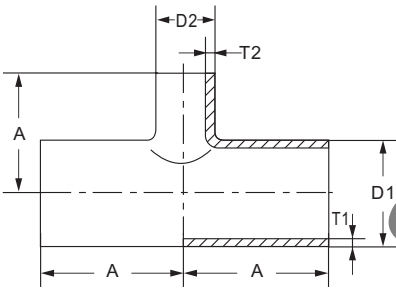
DIN DC03



Size	L1	B			
DN15	53.0	34.0			
DN20	58.0	34.0			
DN25	71.5	50.5			
DN32	76.5	50.5			
DN40	81.5	50.5			
DN50	91.5	64.0			
DN65	108.0	91.0			
DN80	118.0	106.0			
DN100	128.0	119.0			

变径三通 Reducing Tee

DIN DW10



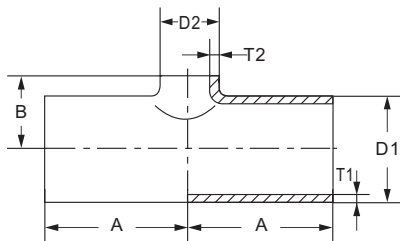
Size	D <sub>1</sub> xT <sub>1</sub>	D <sub>2</sub> xT <sub>2</sub>	A		
DN25/20	28x1.5	22x1.5	50.0		
DN32/25	34x1.5	28x1.5	55.0		
DN40/25	40x1.5	28x1.5	60.0		
DN40/32	40x1.5	34x1.5	60.0		
DN50/25	52x1.5	28x1.5	70.0		
DN50/40	52x1.5	40x1.5	70.0		
DN65/25	70x2.0	28x1.5	80.0		
DN65/40	70x2.0	40x1.5	80.0		
DN65/50	70x2.0	52x1.5	80.0		
DN80/25	85x2.0	28x1.5	90.0		
DN80/40	85x2.0	40x1.5	90.0		
DN80/50	85x2.0	52x1.5	90.0		
DN80/65	85x2.0	70x2.0	90.0		
DN100/25	104x2.0	28x1.5	100.0		
DN100/40	104x2.0	40x1.5	100.0		
DN100/50	104x2.0	52x1.5	100.0		
DN100/65	104x2.0	70x2.0	100.0		
DN100/80	104x2.0	85x2.0	100.0		
DN125/25	129x2.0	28x1.5	187.5		
DN125/40	129x2.0	40x1.5	187.5		
DN125/50	129x2.0	52x1.5	187.5		
DN125/65	129x2.0	70x2.0	187.5		
DN125/80	129x2.0	85x2.0	187.5		
DN125/100	129x2.0	104x2.0	187.5		
DN150/25	154x2.0	28x1.5	225.0		
DN150/40	154x2.0	40x1.5	225.0		
DN150/50	154x2.0	52x1.5	225.0		
DN150/65	154x2.0	70x2.0	225.0		
DN150/80	154x2.0	85x2.0	225.0		
DN150/100	154x2.0	104x2.0	225.0		
DN150/125	154x2.0	129x2.0	225.0		



- ◆ Stainless Steel Sanitary Pipe Fitting
- ◆ Valve、Pump、Fluid Facility
- ◆ 不锈钢卫生级管件、阀门、泵、流体设备

### 变径短三通 Reducing Tee Short

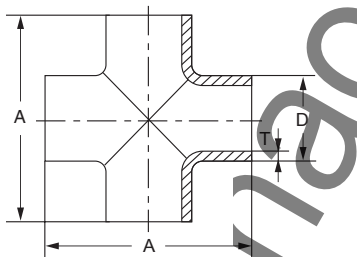
DIN DW11



Size	D <sub>1</sub> xT <sub>1</sub>	D <sub>2</sub> xT <sub>2</sub>	A	B
DN25/20	28x1.5	22x1.5	50.0	16
DN32/25	34x1.5	28x1.5	55.0	20.5
DN40/25	40x1.5	28x1.5	60.0	23.5
DN40/32	40x1.5	34x1.5	60.0	23
DN50/25	52x1.5	28x1.5	70.0	29
DN50/40	52x1.5	40x1.5	70.0	29
DN65/25	70x2.0	28x1.5	80.0	38
DN65/40	70x2.0	40x1.5	80.0	39.5
DN65/50	70x2.0	52x1.5	80.0	39
DN80/25	85x2.0	28x1.5	90.0	45.5
DN80/40	85x2.0	40x1.5	90.0	46.5
DN80/50	85x2.0	52x1.5	90.0	47
DN80/65	85x2.0	70x2.0	90.0	47
DN100/25	104x2.0	28x1.5	100.0	56
DN100/40	104x2.0	40x1.5	100.0	56
DN100/50	104x2.0	52x1.5	100.0	58
DN100/65	104x2.0	70x2.0	100.0	58
DN100/80	104x2.0	85x2.0	100.0	59
DN125/25	129x2.0	28x1.5	187.5	69.5
DN125/40	129x2.0	40x1.5	187.5	69.5
DN125/50	129x2.0	52x1.5	187.5	69.5
DN125/65	129x2.0	70x2.0	187.5	72.5
DN125/80	129x2.0	85x2.0	187.5	72.5
DN125/100	129x2.0	104x2.0	187.5	69.5
DN150/25	154x2.0	28x1.5	225.0	82
DN150/40	154x2.0	40x1.5	225.0	82
DN150/50	154x2.0	52x1.5	225.0	82
DN150/65	154x2.0	70x2.0	225.0	82
DN150/80	154x2.0	85x2.0	225.0	82
DN150/100	154x2.0	104x2.0	225.0	87
DN150/125	154x2.0	129x2.0	225.0	82

### 等径四通 Cross

DIN DW12



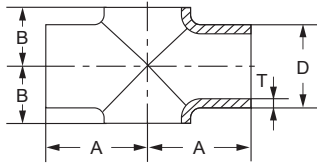
Size	DxT	A	B	C
DN25	28x1.5	100.0		
DN32	34x1.5	110.0		
DN40	40x1.5	120.0		
DN50	52x1.5	140.0		
DN65	70x2.0	160.0		
DN80	85x2.0	180.0		
DN100	104x2.0	200.0		
DN125	129x2.0	375.0		
DN150	154x2.0	450.0		
DN200	204x2.0	600.0		
DN250	254x2.0	750.0		



- ◆ Stainless Steel Sanitary Pipe Fitting
- ◆ Valve、Pump、Fluid Facility
- ◆ 不锈钢卫生级管件、阀门、泵、流体设备

等径短四通 Cross Short

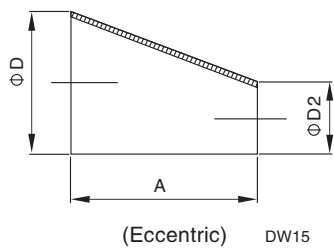
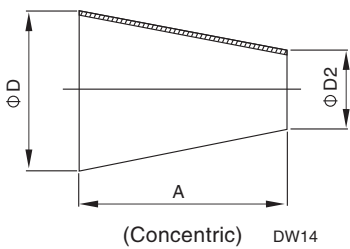
DIN DW13



Size	DxT	A	B	C
DN25	28x1.5	50.0	15.5	
DN32	34x1.5	55.0	19.0	
DN40	40x1.5	60.0	23.0	
DN50	52x1.5	70.0	31.0	
DN65	70x2.0	80.0	41.0	
DN80	85x2.0	90.0	48.5	
DN100	104x2.0	100.0	58.0	
DN125	129x2.0	187.5	74.0	
DN150	154x2.0	225.0	90.0	
DN200	204x2.0	300.0	115.0	
DN250	254x2.0	375.0	140.0	

焊接式大小头 Welded Reducer

DIN DW14 / DW15



Size	A	D	D2
DN20/15	7.0	22.0	18.0
DN25/20	11.0	28.0	22.0
DN32/20	22.0	34.0	22.0
DN32/25	11.0	34.0	28.0
DN40/20	33.0	40.0	22.0
DN40/25	22.0	40.0	28.0
DN40/32	11.0	40.0	34.0
DN50/25	44.0	52.0	28.0
DN50/32	33.0	52.0	34.0
DN50/40	22.0	52.0	40.0
DN65/25	73.0	70.0	28.0
DN65/32	62.0	70.0	34.0
DN65/40	51.0	70.0	40.0
DN65/50	29.0	70.0	52.0
DN80/40	78.0	85.0	40.0
DN80/50	56.0	85.0	52.0
DN80/65	27.0	85.0	70.0
DN100/50	90.0	104.0	52.0
DN100/65	61.0	104.0	70.0
DN100/80	34.0	104.0	85.0

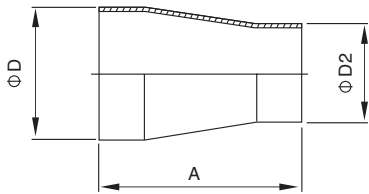


- ◆ Stainless Steel Sanitary Pipe Fitting
- ◆ Valve、Pump、Fluid Facility
- ◆ 不锈钢卫生级管件、阀门、泵、流体设备

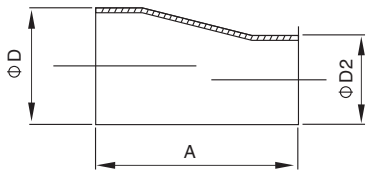
SANITARY PIPE FITTINGS 卫生级管件

### 焊接式大小头 Welded Reducer

DIN | DW15 / DW16



(Concentric) DW15

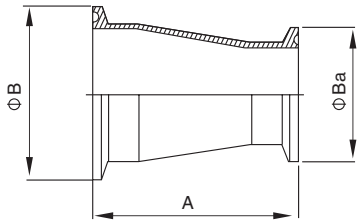


(Eccentric) DW16

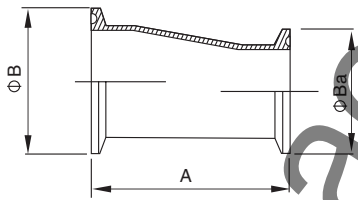
Size	A	D	D2
DN20/15	60.0	22.0	18.0
DN25/20	60.0	28.0	22.0
DN32/20	80.0	34.0	22.0
DN32/25	80.0	34.0	28.0
DN40/20	102.0	40.0	22.0
DN40/25	102.0	40.0	28.0
DN40/32	102.0	40.0	34.0
DN50/25	115.0	52.0	28.0
DN50/32	115.0	52.0	34.0
DN50/40	115.0	52.0	40.0
DN65/25	125.0	70.0	28.0
DN65/32	125.0	70.0	34.0
DN65/40	120.0	70.0	40.0
DN65/50	120.0	70.0	52.0
DN80/40	140.0	85.0	40.0
DN80/50	125.0	85.0	52.0
DN80/65	120.0	85.0	70.0
DN100/50	160.0	104.0	52.0
DN100/65	127.0	104.0	70.0
DN100/80	120.0	104.0	85.0

### 卡箍式大小头 Clamped Reducer

DIN | DC04 / DC05



(Concentric) DC04



(Eccentric) DC05

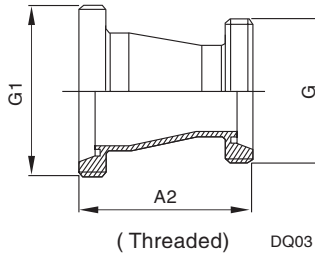
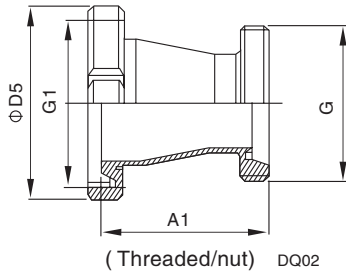
Size	A	B	Ba
DN20/15	86.0	34.0	34.0
DN25/20	86.0	50.5	34.0
DN32/20	106.0	50.5	34.0
DN32/25	106.0	50.5	50.5
DN40/20	128.0	50.5	34.0
DN40/25	128.0	50.5	50.5
DN40/32	128.0	50.5	50.5
DN50/25	141.0	64.0	50.5
DN50/32	141.0	64.0	50.5
DN50/40	141.0	64.0	50.5
DN65/25	151.0	91.0	50.5
DN65/32	151.0	91.0	50.5
DN65/40	146.0	91.0	50.5
DN65/50	146.0	91.0	64.0
DN80/40	166.0	106.0	50.5
DN80/50	151.0	106.0	64.0
DN80/65	146.0	106.0	91.0
DN100/50	192.0	119.0	64.0
DN100/65	159.0	119.0	91.0
DN100/80	152.0	119.0	106.0



- ◆ Stainless Steel Sanitary Pipe Fitting
- ◆ Valve、Pump、Fluid Facility
- ◆ 不锈钢卫生级管件、阀门、泵、流体设备

由任式大小头 Union-type Reducer

DIN | DQ02 / DQ03



Size	A1	G	D5	A2	G1
DN20/15	93.0	RD34x1/8	54.0	98.0	RD44x1/6
DN25/20	97.0	RD44x1/6	62.0	101.0	RD52x1/6
DN32/20	117.0	RD44x1/6	68.0	121.0	RD58x1/6
DN32/25	118.0	RD52x1/6	68.0	122.0	RD58x1/6
DN40/20	139.0	RD44x1/6	78.0	143.0	RD65x1/6
DN40/25	140.0	RD52x1/6	78.0	144.0	RD65x1/6
DN40/32	140.0	RD58x1/6	78.0	144.0	RD65x1/6
DN50/25	153.0	RD52x1/6	92.0	157.0	RD78x1/6
DN50/32	153.0	RD58x1/6	92.0	157.0	RD78x1/6
DN50/40	153.0	RD65x1/6	92.0	157.0	RD78x1/6
DN65/25	163.0	RD52x1/6	110.0	169.0	RD95x1/6
DN65/32	163.0	RD58x1/6	110.0	169.0	RD95x1/6
DN65/40	158.0	RD65x1/6	110.0	164.0	RD95x1/6
DN65/50	158.0	RD78x1/6	110.0	164.0	RD95x1/6
DN80/40	181.0	RD65x1/6	126.0	187.0	RD110x1/4
DN80/50	166.0	RD78x1/6	126.0	172.0	RD110x1/4
DN80/65	183.0	RD95x1/6	126.0	174.0	RD110x1/4
DN100/50	195.0	RD78x1/6	146.0	209.0	RD130x1/4
DN100/65	174.0	RD95x1/6	146.0	178.0	RD130x1/4
DN100/80	170.0	RD110x1/4	146.0	174.0	RD130x1/4

maofei valve



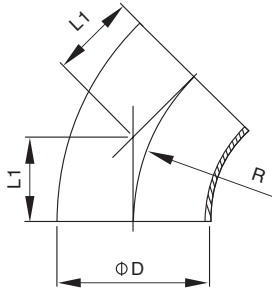




- ◆ Stainless Steel Sanitary Pipe Fitting
- ◆ Valve、Pump、Fluid Facility
- ◆ 不锈钢卫生级管件、阀门、泵、流体设备

**短型焊接式弯头(45°) Short welded Elbow**

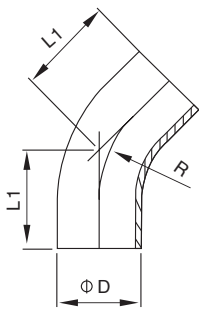
SMS | SW04



Size	DxT	L1	R		
1"	25.4x1.2	15.5	38.1		
1.5"	38.1x1.2	23.6	57.2		
2"	50.8x1.2	31.6	76.2		
2.5"	63.5x1.6	39.5	95.3		
3"	76.2x1.6	47.2	114.3		
4"	101.6x2.0	63	152.4		

**焊式加长弯头(45°) Elbow Long**

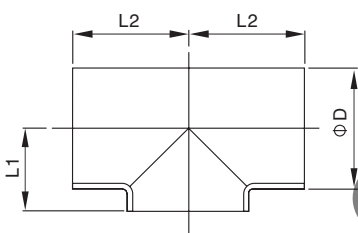
SMS | SW05



Size	DxT	L1	R		
1"	25.4x1.2	42.5	38.7		
1.5"	38.1x1.2	56.8	57.2		
2"	50.8x1.2	68.6	76.2		
2.5"	63.5x1.6	78.4	95.3		
3"	76.2x1.6	85.2	114.3		
4"	101.6x2.0	103	152.4		

**短型焊接式三通 Short welded Tee**

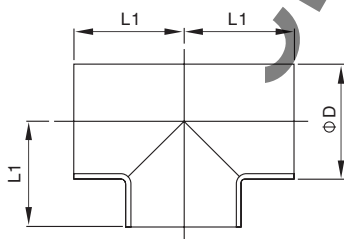
SMS | SW06



Size	DxT	L1	L2		
1"	25.4x1.2	15	55		
1.5"	38.1x1.2	21.5	70		
2"	50.8x1.2	29	82		
2.5"	63.5x1.6	36	105		
3"	76.2x1.6	43	110		
4"	101.6x2.0	57	150		

**长型焊接式三通 Long welded Tee**

SMS | SW07



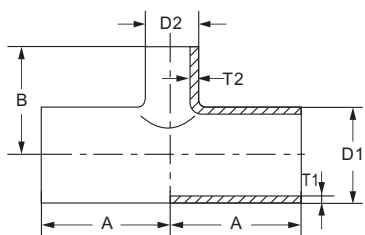
Size	DxT	L1			
1"	25.4x1.2	55			
1.5"	38.1x1.2	70			
2"	50.8x1.2	82			
2.5"	63.5x1.6	105			
3"	76.2x1.6	110			
4"	101.6x2.0	150			



- ◆ Stainless Steel Sanitary Pipe Fitting
- ◆ Valve、Pump、Fluid Facility
- ◆ 不锈钢卫生级管件、阀门、泵、流体设备

### 焊式异径三通 Reducing Tee

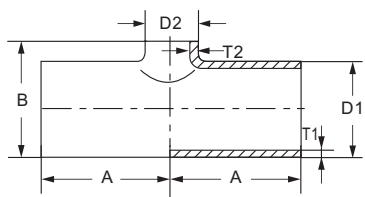
SMS | SW08



Size	D <sub>1</sub> xT <sub>1</sub>	D <sub>2</sub> xT <sub>2</sub>	A	B
2"x1.5"	50.8x1.2	38.1x1.2	82	70
2.5"x1.5"	63.5x1.6	38.1x1.2	105	70
2.5"x2"	63.5x1.6	50.8x1.2	105	82
3"x1.5"	76.2x1.6	38.1x1.2	110	80
3"x2.0"	76.2x1.6	50.8x1.2	110	82

### 焊式异径短三通 Reducing Tee Short

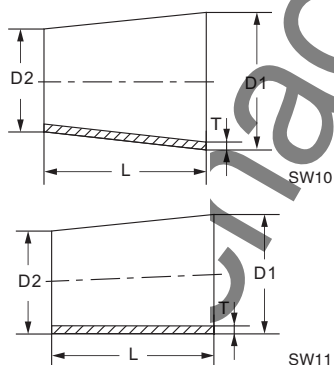
SMS | SW09



Size	D <sub>1</sub> xT <sub>1</sub>	D <sub>2</sub> xT <sub>2</sub>	A	B
1.5"x1"	38.1x1.2	25.4x1.2	70	40.7
2"x1"	50.8x1.2	25.4x1.2	82	54.1
2"x1.5"	50.8x1.2	38.1x1.2	82	54.1
2.5"x1.5"	63.5x1.6	38.1x1.2	105	67.5
2.5"x2"	63.5x1.6	50.8x1.2	105	66.5
3"x1.5"	76.2x1.6	38.1x1.2	110	80.6
3"x2"	76.2x1.6	50.8x1.2	110	80.6
3"x2.5"	76.2x1.6	63.5x1.6	110	80.0
4"x2"	101.6x2.0	50.8x1.2	150	106.6
4"x2.5"	101.6x2.0	63.5x1.6	150	106.6
4"x3"	101.6x2.0	76.2x1.6	150	106.6

### 焊式同心变径 Reducer(Concentric) / 焊式偏心变径 Reducer(Eccentric)

SMS | SW10 / SW11



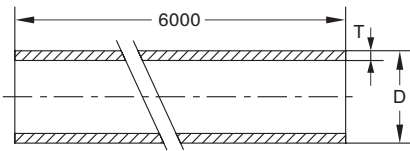
Size	D <sub>1</sub> xT <sub>1</sub>	D <sub>2</sub> xT <sub>2</sub>	L(同心)	L(偏心)
1.5"x1"	38.1x1.2	25.4x1.2	44	44
2"x1.5"	50.8x1.2	38.1x1.2	42	42
2"x1"	50.8x1.2	25.4x1.2	86	86
2.5"x2"	63.5x1.6	50.8x1.6	40	40
2.5"x1.5"	63.5x1.6	38.1x1.6	82	82
3"x2.5"	76.2x1.6	63.5x1.6	39	39
3"x2"	76.2x1.6	50.8x1.6	79	79
4"x3"	101.6x2.0	76.2x2.0	81	81



- ◆ Stainless Steel Sanitary Pipe Fitting
- ◆ Valve、Pump、Fluid Facility
- ◆ 不锈钢卫生级管件、阀门、泵、流体设备

**卫生直管 Sanitary Pipe**

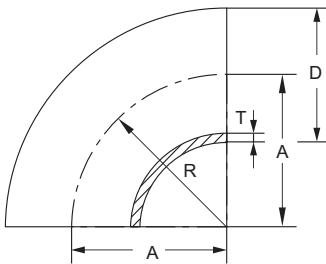
BS | BW01



Size	DxT	A	B		
1"	25.4x1.6				
1.5"	38.1x1.6				
2"	50.8x1.6				
2.5"	63.5x1.6				
3"	76.2x1.6				
4"	101.6x2.0				

**焊式加长弯头(90°) Elbow Long**

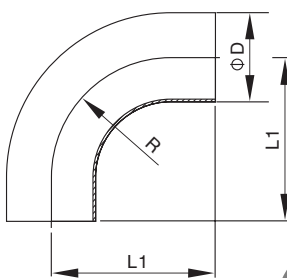
BS | BW02



Size	DxT	A	R		
1"	25.4x1.6	38.1	38.1		
1.5"	38.1x1.6	57.2	57.2		
2"	50.8x1.6	76.2	76.2		
2.5"	63.5x1.6	95.3	95.3		
3"	76.2x1.6	114.3	114.3		
4"	101.6x2.0	152.4	152.4		

**加直端焊接式弯头(90°) Elbow Long**

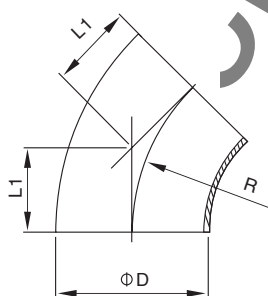
BS | BW03



Size	DxT	L1	R		
1"	25.4x1.6	65	38.1		
1.5"	38.1x1.6	85	57.2		
2"	50.8x1.6	110	76.2		
2.5"	63.5x1.6	135	95.3		
3"	76.2x1.6	155	114.3		
4"	101.6x2.0	195	152.4		

**短型焊接式弯头(45°) Short welded Elbow**

BS | BW04



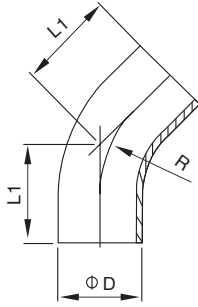
Size	DxT	L1	R		
1"	25.4x1.6	15.8	38.1		
1.5"	38.1x1.6	23.7	57.2		
2"	50.8x1.6	31.8	76.2		
2.5"	63.5x1.6	39.6	95.3		
3"	76.2x1.6	47.5	114.3		
4"	101.6x2.0	63.2	152.4		



- ◆ Stainless Steel Sanitary Pipe Fitting
- ◆ Valve、Pump、Fluid Facility
- ◆ 不锈钢卫生级管件、阀门、泵、流体设备

### 焊式加长弯头(45°) Elbow Long

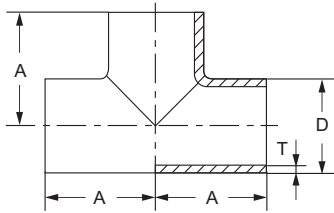
BS | BW05



Size	DxT	L1	R
1"	25.4x1.6	30.2	38.1
1.5"	38.1x1.6	41.3	57.2
2"	50.8x1.6	58.7	76.2
2.5"	63.5x1.6	76.2	95.3
3"	76.2x1.6	93.7	114.3
4"	101.6x2.0	122.2	152.4

### 等径三通 Tee

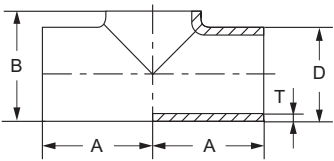
BS | BW06



Size	DxT	A	B
1"	25.4x1.6	44	
1.5"	38.1x1.6	64	
2"	50.8x1.6	89	
2.5"	63.5x1.6	114	
3"	76.2x1.6	134	
4"	101.6x2.0	195	

### 等径短三通 Tee Short

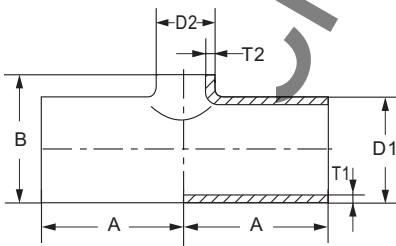
BS | BW07



Size	DxT	A	B
1"	25.4x1.6	44	27
1.5"	38.1x1.6	64	40.6
2"	50.8x1.6	89	54.3
2.5"	63.5x1.6	114	67
3"	76.2x1.6	134	81.2
4"	101.6x2.0	195	107

### 焊式异径三通 Reducing Tee

BS | BW08



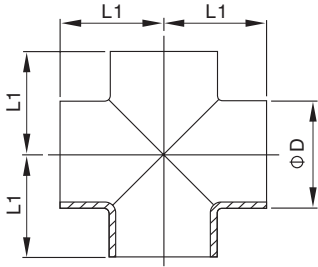
Size	D <sub>1</sub> xT <sub>1</sub>	D <sub>2</sub> xT <sub>2</sub>	A	B
1.5"x1"	38.1x1.6	25.4x1.6	75	40.6
2"x1.5"	50.8x1.6	38.1x1.6	89	54.3
2"x1"	50.8x1.6	25.4x1.6	89	54.3
2.5"x2"	63.5x1.6	50.8x1.6	95	67
2.5"x1.5"	63.5x1.6	38.1x1.6	95	67
2.5"x1"	63.5x1.6	25.4x1.6	95	67
3"x2.5"	76.2x1.6	63.5x1.6	95	81.2
3"x2"	76.2x1.6	50.8x1.6	95	81.2
3"x1.5"	76.2x1.6	38.1x1.6	95	81.2
4"x3"	101.6x2.0	76.2x1.6	127	107
4"x2.5"	101.6x2.0	63.5x1.6	127	107
4"x2"	101.6x2.0	50.8x1.6	127	107



- ◆ Stainless Steel Sanitary Pipe Fitting
- ◆ Valve、Pump、Fluid Facility
- ◆ 不锈钢卫生级管件、阀门、泵、流体设备

### 等径四通 Cross

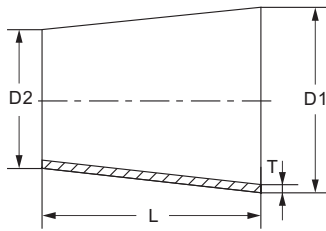
BS | BW09



Size	DxT	L1	B
1"	25.4x1.6	65	
1.5"	38.1x1.6	85	
2"	50.8x1.6	110	
2.5"	63.5x1.6	135	
3"	76.2x1.6	155	
4"	101.6x2.0	195	

### 焊式同心变径管 Reducer Concentric

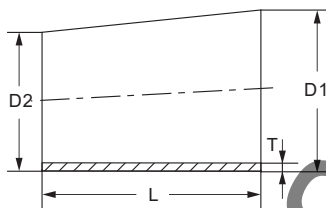
BS | BW10



Size	D1xT1	D2xT2	L
1.5"x1"	38.1x1.6	25.4x1.6	28
2"x1.5"	50.8x1.6	38.1x1.6	31
2"x1"	50.8x1.6	25.4x1.6	49
2.5"x2"	63.5x1.6	50.8x1.6	41
2.5"x1.5"	63.5x1.6	38.1x1.6	48
2.5"x1"	63.5x1.6	25.4x1.6	76
3"x2.5"	76.2x1.6	63.5x1.6	40
3"x2"	76.2x1.6	50.8x1.6	50
3"x1.5"	76.2x1.6	38.1x1.6	74
4"x3"	101.6x2.0	76.2x1.6	51
4"x2.5"	101.6x2.0	63.5x1.6	75
4"x2"	101.6x2.0	50.8x1.6	100

### 焊式偏心变径管 Reducer Eccentric

BS | BW11



Size	D1xT1	D2xT2	L
1.5"x1"	38.1x1.6	25.4x1.6	29
2"x1.5"	50.8x1.6	38.1x1.6	39
2"x1"	50.8x1.6	25.4x1.6	48
2.5"x2"	63.5x1.6	50.8x1.6	44
2.5"x1.5"	63.5x1.6	38.1x1.6	47
2.5"x1"	63.5x1.6	25.4x1.6	73
3"x2.5"	76.2x1.6	63.5x1.6	36
3"x2"	76.2x1.6	50.8x1.6	46
3"x1.5"	76.2x1.6	38.1x1.6	70
4"x3"	101.6x2.0	76.2x1.6	78
4"x2.5"	101.6x2.0	63.5x1.6	69
4"x2"	101.6x2.0	50.8x1.6	91









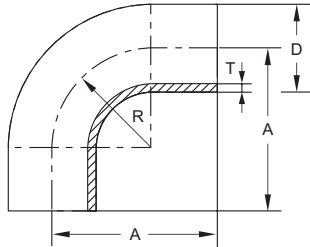




- ◆ Stainless Steel Sanitary Pipe Fitting
- ◆ Valve、Pump、Fluid Facility
- ◆ 不锈钢卫生级管件、阀门、泵、流体设备

焊式加长弯头(90°) Elbow Long

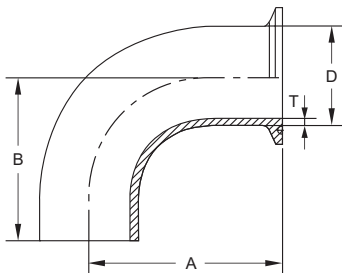
3A | 2CW



Size(inch)	T(mm)	A(inch)	R(inch)	C
1	1.65	2 1/16	1 1/2	
1 1/2	1.65	2 15/16	2 1/4	
2	1.65	4 1/16	3	
2 1/2	1.65	5 3/16	3 3/4	
3	1.65	6 5/16	4 1/2	
4	2.11	8 5/16	6	

一卡式加长弯头(90°) Elbow both ends Ferrule/Weld

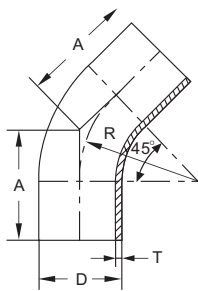
3A | 2CKW



Size(inch)	T(mm)	A(inch)	B(inch)	C
1	1.65	2 9/16	2 1/16	
1 1/2	1.65	3 7/16	2 15/16	
2	1.65	4 9/16	4 1/16	
2 1/2	1.65	5 11/16	5 3/16	
3	1.65	6 13/16	6 5/16	
4	2.11	8 15/16	8 5/16	

焊式加长弯头(45°) Elbow Long

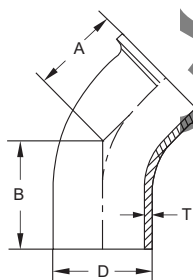
3A | 2KW



Size(inch)	T(mm)	A(inch)	R(inch)	C
1	1.65	1 3/16	1 1/2	
1 1/2	1.65	1 5/8	2 1/4	
2	1.65	2 5/16	3	
2 1/2	1.65	3	3 3/4	
3	1.65	3 11/16	4 1/2	
4	2.11	4 13/16	6	

一卡式加长弯头(45°) Elbow both ends Ferrule/Weld

3A | 2CKW



Size(inch)	T(mm)	A(inch)	B(inch)	C
1	1.65	1 11/16	1 3/16	
1 1/2	1.65	2 1/8	1 5/8	
2	1.65	2 13/16	2 5/16	
2 1/2	1.65	3 1/2	3	
3	1.65	4 3/16	3 11/16	
4	2.11	5 7/16	4 13/16	



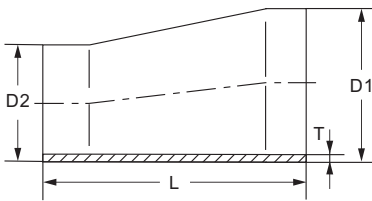




- ◆ Stainless Steel Sanitary Pipe Fitting
- ◆ Valve、Pump、Fluid Facility
- ◆ 不锈钢卫生级管件、阀门、泵、流体设备

焊式偏心变径 Eccentric Reducer

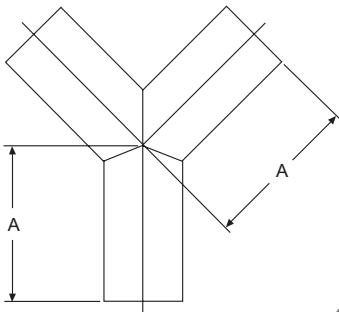
3A | 32W



Size(inch)	T(mm)	A(inch)	B	C
1 1/2x1	1.65	2		
2x1	1.65	4		
2x1 1/2	1.65	2		
2 1/2x1	1.65	6		
2 1/2x1 1/2	1.65	4		
2 1/2x2	1.65	2		
3x1	1.65	8		
3x1 1/2	1.65	6		
3x2	1.65	4		
3x2 1/2	1.65	2		
4x1	2.11	12		
4x1 1/2	2.11	10		
4x2	2.11	8		
4x2 1/2	2.11	6		
4x3	2.11	4		
6x3	2.8	9		
6x4	2.8	9		

Y三通 True Wye

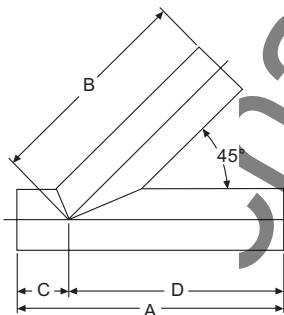
3A | 28BWWW



Size(inch)	T(mm)	A(inch)	B	C
1	1.65	3		
1 1/2	1.65	3		
2	1.65	4		
2 1/2	1.65	5		
3	1.65	6		
4	2.11	8		
6	2.11	8		

对焊Y三通(45°) Lateral

3A | 28AWWW



Size(inch)	T(mm)	A(inch)	B(inch)	C(inch)	D(inch)
1	1.65	3 5/8	3 13/16	1/2	3 1/8
1 1/2	1.65	4 3/8	4 9/16	7/8	3 1/2
2	1.65	5 1/8	5	1 1/8	4
2 1/2	1.65	6 5/8	6 3/8	1 5/8	5
3	1.65	8 1/2	7 3/4	2	6 1/2
4	2.11	10 1/2	9 3/8	2 3/8	8 1/8



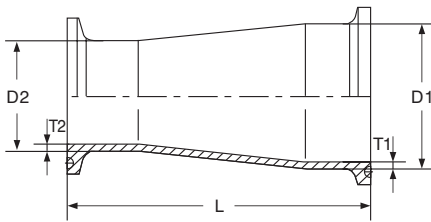




- ◆ Stainless Steel Sanitary Pipe Fitting
- ◆ Valve、Pump、Fluid Facility
- ◆ 不锈钢卫生级管件、阀门、泵、流体设备

### 卡式同心变径 Concentric Reducer

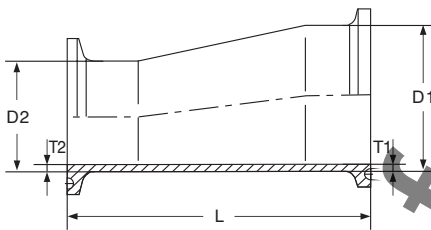
3A | 31-14MP



Size(inch)	T1(mm)	T2(mm)	A(inch)	B	C
3/4x1/2	1.65	1.65	2		
1x1/2	1.65	1.65	3 3/8		
1x3/4	1.65	1.65	3 3/8		
1 1/2x1/2	1.65	1.65	3 3/8		
1 1/2x3/4	1.65	1.65	3 3/8		
1 1/2x1	1.65	1.65	3 3/8		
2x1	1.65	1.65	3 3/8		
2x1 1/2	1.65	1.65	3 3/8		
2 1/2x1/2	1.65	1.65	3 3/8		
2 1/2x2	1.65	1.65	3 3/8		
3x1 1/2	1.65	1.65	4 5/8		
3x2	1.65	1.65	4 5/8		
3x2 1/2	1.65	1.65	4 5/8		
4x2	2.11	1.65	4 5/8		
4x2 1/2	2.11	1.65	4 5/8		
4x3	2.11	1.65	4 5/8		
6x3	2.80	1.65	10 3/8		
6x4	2.80	2.11	10 1/2		

### 卡式偏心变径 Eccentric Reducer

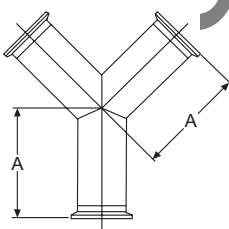
3A | 32-14MP



Size(inch)	T1(mm)	T2(mm)	A(inch)	B	C
3/4x1/2	1.65	1.65	2		
1x1/2	1.65	1.65	3		
1x 3/4	1.65	1.65	2		
1 1/2x1/2	1.65	1.65	5		
1 1/2x3/4	1.65	1.65	4		
1 1/2x1	1.65	1.65	3		
2x1	1.65	1.65	5		
2x1 1/2	1.65	1.65	3		
2 1/2x1/2	1.65	1.65	5		
2 1/2x2	1.65	1.65	3		
3x1 1/2	1.65	1.65	7		
3x2	1.65	1.65	5		
3x2 1/2	1.65	1.65	3		
4x2	2.11	1.65	9 1/8		
4x2 1/2	2.11	1.65	7 1/8		
4x3	2.11	1.65	5 1/8		
6x3	2.80	1.65	10 3/8		
6x4	2.80	2.11	10 1/2		

### Y三通 True Y

3A | 28BMP



Size(inch)	T(mm)	A(inch)	B	C
1/2	1.65	2 1/2		
3/4	1.65	2 1/2		
1	1.65	3 1/2		
1 1/2	1.65	3 1/2		
2	1.65	4 1/2		
2 1/2	1.65	5 1/2		
3	1.65	6 1/2		
4	2.11	8 5/8		
6	2.8	8 3/4		





- ◆ Stainless Steel Sanitary Pipe Fitting
- ◆ Valve、Pump、Fluid Facility
- ◆ 不锈钢卫生级管件、阀门、泵、流体设备

### ASME BPE Standard Specification

Design Requirement: Automatic Welding, Ovality, Wall Thickness and Squareness

Traceability (Laser Marking): Heat Number, Size, Grade, Surface Finishes and Material

Packing: Color Coded End Caps, Transparent Plastic Bag, and Detailed Label

### Tolerance:

Nominal OD Size	1/2"	3/4"	1"	1 1/2"	2"	2 1/2"	3"	4"	6"
<b>O.D. Tolerance</b>	±.005	±.005	±.005	±.008	±.008	±.010	±.010	±.015	±.030
<b>Nominal Wall Thickness</b>	.065	.065	.065	.065	.065	.065	.065	.083	.109
<b>Wall Thickness Tolerance before EP</b>	+.005 - .008	+.005 - .008	+.005 - .008	+.005 - .008	+.005 - .008	+.005 - .008	+.005 - .008	+.008 - .010	+.015 - .015
<b>Wall Thickness Tolerance after EP</b>	+.005 - .010	+.005 - .010	+.005 - .010	+.005 - .010	+.005 - .010	+.005 - .010	+.005 - .010	+.008 - .012	+.015 - .017
<b>Control Length</b> (C)	.750	.750	.750	.750	.750	.750	.750	.750	.750
<b>Tangent Length</b> (T)	1.500	1.500	1.500	1.500	1.500	1.500	1.750	2.000	2.500
<b>Squareness Face to Tangent</b> (B)	.005	.005	.008	.008	.008	.010	.016	.016	.030
<b>Off Angle</b> (O)	.014	.018	.025	.034	.043	.054	.068	.086	.135
<b>Off Plane</b> (P)	±.030	±.030	±.030	±.050	±.050	±.050	±.050	±.060	±.060

•Roundness



•Wall Thickness



•Squareness Face to Tangent



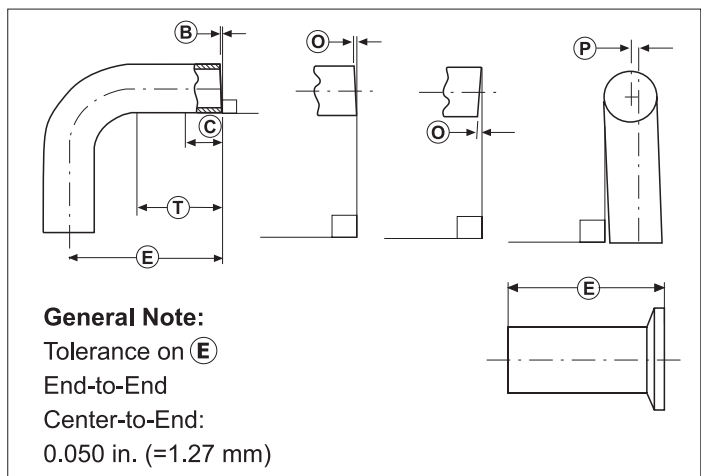
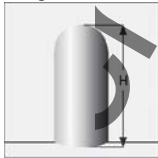
•Off Angle



•Off Plane



•Height





- ◆ Stainless Steel Sanitary Pipe Fitting
- ◆ Valve、Pump、Fluid Facility
- ◆ 不锈钢卫生级管件、阀门、泵、流体设备

#### Surface Treatment: Acceptance Criteria for ID Surface Finishes

ANOMALY OR INDICATION	ACCEPTANCE CRITERIA
Cluster of pits	None accepted.
Discoloration(Demarcation)	If < 5% of the total area when visually inspected and Ra is met.
Grit lines	If Ra is met.
Longitudinal welds	If polished smooth, blended, and Ra is met.
Nicks	None accepted.
Oxides	None accepted.
Pits	If dia. < 0.020", and bottom is shiny.
Scratches	If length < 0.25", depth < 0.003", and Ra is met.
Star burst	None accepted.
Surface cracks	None accepted.
Surface inclusions	If Ra is met and there is no liquid penetrant indication.
Surface residuals	None accepted, visual inspection without magnification.
Surface roughness(Ra)	See Tables Surface Finishes.
Water stains	If no deposits.
Weld slag	None accepted.
Weld porosity	None accepted.

Surface Finish Code	Maximum Interior Surface Finish	Exterior Surface Finish	ASME BPE Surface Finish Designation
#3(PC)	20 Ra Mechanical	Unpolished	SFF1
#7(PL)	20 Ra Mechanical	Polished	SFF1
#3E(PD)	15 Ra Electropolish	Unpolished	SFF4
#7E(PM)	15 Ra Electropolish	Polished	SFF4
#3E(PJ)	10 Ra Electropolish	Unpolished	
#7E(PR)	10 Ra Electropolish	Polished	
#0(PU)	Unpolished	Unpolished	

#### CONVERSION OF SURFACE FINISHES CHART:

STANDARD GRIT	Ra		RMS	
	μ-in	μ-m	μ-in	μ-m
150grit	27-32	0.68-0.80	30-35	0.76-0.89
180grit	18-23	0.46-0.58	20-25	0.51-0.64
240grit	14-18	0.34-0.46	15-20	0.38-0.51
320grit	8-10	0.21-0.25	9-11	0.23-0.28

**GENERAL NOTE:** All Ra readings are taken across the lay.

**NOTE:** The average Ra is derived from reading taken at four cross sections approximately 90° apart, Other Ra readings are available if agreed upon between vendor and owner/user. No single reading exceeding Ra max.

#### Test Procedures:

- Verification of Material Grade
- Visual Inspection
- Welds
- Internal Surface Roughness Measurement
- Control of Dimensions
- Internal Surface
- End Preparation

**Documentation:** Certified Material Test Report 3.1B as Per DIN EN10204.







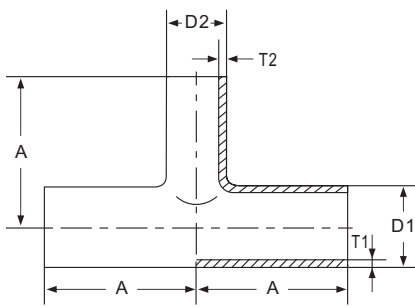




- ◆ Stainless Steel Sanitary Pipe Fitting
- ◆ Valve、Pump、Fluid Facility
- ◆ 不锈钢卫生级管件、阀门、泵、流体设备

焊式变径三通 Reducing Tee

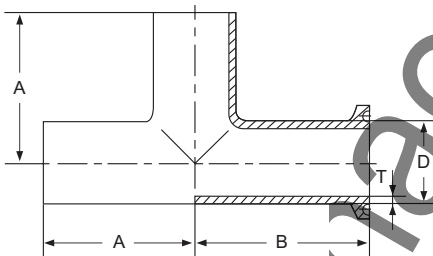
| BPE | S7RWWW



Size(inch)	T1(mm)	T2(mm)	A(inch)	B(inch)
3/4x1/2	1.65	1.65	2	2
1x1/2	1.65	1.65	2 1/8	2 1/8
1x3/4	1.65	1.65	2 1/8	2 1/8
1 1/2x1/2	1.65	1.65	2 3/8	2 3/8
1 1/2x3/4	1.65	1.65	2 3/8	2 3/8
1 1/2x1	1.65	1.65	2 3/8	2 3/8
2x1/2	1.65	1.65	2 7/8	2 5/8
2x3/4	1.65	1.65	2 7/8	2 5/8
2x1	1.65	1.65	2 7/8	2 5/8
2x1 1/2	1.65	1.65	2 7/8	2 5/8
2 1/2x1/2	1.65	1.65	3 1/8	2 7/8
2 1/2x3/4	1.65	1.65	3 1/8	2 7/8
2 1/2x1	1.65	1.65	3 1/8	2 7/8
2 1/2x1 1/2	1.65	1.65	3 1/8	2 7/8
2 1/2x2	1.65	1.65	3 1/8	2 7/8
3x1/2	1.65	1.65	3 3/8	3 1/8
3x3/4	1.65	1.65	3 3/8	3 1/8
3x1	1.65	1.65	3 3/8	3 1/8
3x1 1/2	1.65	1.65	3 3/8	3 1/8
3x2	1.65	1.65	3 3/8	3 1/8
3x2 1/2	1.65	1.65	3 3/8	3 1/8
4x1/2	2.11	1.65	4 1/8	3 1/8
4x3/4	2.11	1.65	4 1/8	3 5/8
4x1	2.11	1.65	4 1/8	3 5/8
4x1 1/2	2.11	1.65	4 1/8	3 5/8
4x2	2.11	1.65	4 1/8	3 7/8
4x2 1/2	2.11	1.65	4 1/8	3 7/8
4x3	2.11	1.65	4 1/8	3 7/8
6x4	2.80	2.11	5 5/8	5 1/8

一卡两焊等径三通 Tee ends Ferrule

| BPE | S7WKW



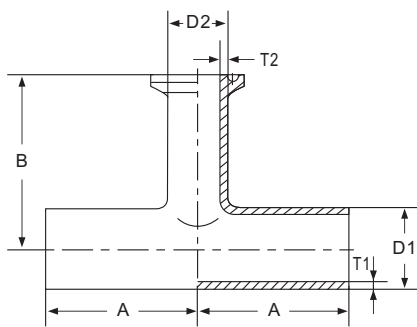
Size(inch)	T(mm)	A(inch)	B(inch)	C
1/2	1.65	1 7/8	1 1/4	
3/4	1.65	2	2 3/8	
1	1.65	2 1/8	2 5/8	
1 1/2	1.65	2 3/8	2 7/8	
2	1.65	2 7/8	3 3/8	
2 1/2	1.65	3 1/8	3 5/8	
3	1.65	3 3/8	3 7/8	
4	2.11	4 1/8	4 3/4	
6	2.8	5 5/8	7 1/8	



- ◆ Stainless Steel Sanitary Pipe Fitting
- ◆ Valve、Pump、Fluid Facility
- ◆ 不锈钢卫生级管件、阀门、泵、流体设备

### 一卡两焊变径三通 Reducing Tee/Branch Ferrule

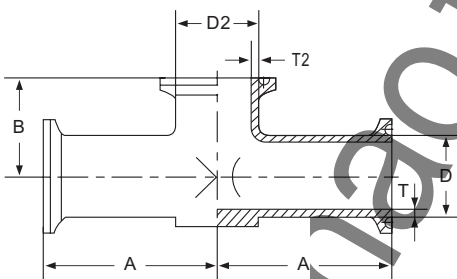
BPE | S7RWWK



Size(inch)	T1(mm)	T2(mm)	A(inch)	B(inch)
3/4x1/2	1.65	1.65	2	2
1x1/2	1.65	1.65	2 1/8	2 5/8
1x3/4	1.65	1.65	2 1/8	2 5/8
1 1/2x1/2	1.65	1.65	2 3/8	2 7/8
1 1/2x3/4	1.65	1.65	2 3/8	2 7/8
1 1/2x1	1.65	1.65	2 3/8	2 7/8
2x1/2	1.65	1.65	2 7/8	3 1/8
2x3/4	1.65	1.65	2 7/8	3 1/8
2x1	1.65	1.65	2 7/8	3 1/8
2x1 1/2	1.65	1.65	2 7/8	3 1/8
2 1/2x1/2	1.65	1.65	3 1/8	3 3/8
2 1/2x3/4	1.65	1.65	3 1/8	3 3/8
2 1/2x1	1.65	1.65	3 1/8	3 3/8
2 1/2x1 1/2	1.65	1.65	3 1/8	3 3/8
2 1/2x2	1.65	1.65	3 1/8	3 3/8
3x1/2	1.65	1.65	3 3/8	3 5/8
3x3/4	1.65	1.65	3 3/8	3 5/8
3x1	1.65	1.65	3 3/8	3 5/8
3x1 1/2	1.65	1.65	3 3/8	3 5/8
3x2	1.65	1.65	3 3/8	3 5/8
3x2 1/2	1.65	1.65	3 3/8	3 5/8
4x1/2	2.11	1.65	4 1/8	4 1/8
4x3/4	2.11	1.65	4 1/8	4 1/8
4x1	2.11	1.65	4 1/8	4 1/8
4x1 1/2	2.11	1.65	4 1/8	4 1/8
4x2	2.11	1.65	4 1/8	4 1/8
4x2 1/2	2.11	1.65	4 1/8	4 1/8
4x3	2.11	1.65	4 1/8	4 1/8
6x4	2.80	2.11	5 5/8	5 5/8

### 卡式短三通 Instrument Tee Clamp Ends

BPE | S7RSGTMP



Size(inch)	T(mm)	A(inch)	B(inch)	C
1/2 x 1 1/2	1.65	3	7/8	
3/4 x 1 1/2	1.65	3	1	
1 x 1 1/2	1.65	3	1 1/8	
1/2 x 2	1.65	3 1/4	1	
3/4 x 2	1.65	3 1/4	1 1/8	
1 x 2	1.65	3 1/4	1 1/4	
1 1/2 x 2	1.65	3 1/4	1 1/2	

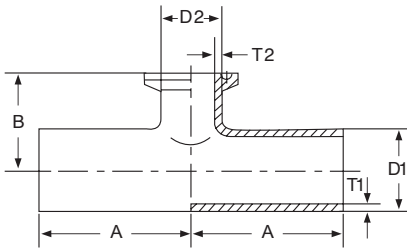




- ◆ Stainless Steel Sanitary Pipe Fitting
- ◆ Valve、Pump、Fluid Facility
- ◆ 不锈钢卫生级管件、阀门、泵、流体设备

一卡两焊变径短三通 Reducing Short Outlet Tee

BPE | S7RSWWK



Size(inch)	T1(mm)	T2(mm)	A(inch)	B(inch)
3/4x1/2	1.65	1.65	2	
1x1/2	1.65	1.65	2 1/8	1 1/8
1x3/4	1.65	1.65	2 1/8	1 1/8
1 1/2x1/2	1.65	1.65	2 3/8	1 3/8
1 1/2x3/4	1.65	1.65	2 3/8	1 3/8
1 1/2x1	1.65	1.65	2 3/8	1 3/8
2x1/2	1.65	1.65	2 7/8	1 5/8
2x3/4	1.65	1.65	2 7/8	1 5/8
2x1	1.65	1.65	2 7/8	1 5/8
2x1 1/2	1.65	1.65	2 7/8	1 5/8
2 1/2x1/2	1.65	1.65	3 1/8	1 7/8
2 1/2x3/4	1.65	1.65	3 1/8	1 7/8
2 1/2x1	1.65	1.65	3 1/8	1 7/8
2 1/2x1 1/2	1.65	1.65	3 1/8	1 7/8
2 1/2x2	1.65	1.65	3 1/8	1 7/8
3x1/2	1.65	1.65	3 3/8	2 1/8
3x3/4	1.65	1.65	3 3/8	2 1/8
3x1	1.65	1.65	3 3/8	2 1/8
3x1 1/2	1.65	1.65	3 3/8	2 1/8
3x2	1.65	1.65	3 3/8	2 1/8
3x2 1/2	1.65	1.65	3 3/8	2 1/8
4x1/2	2.11	1.65	4 1/8	2 5/8
4x3/4	2.11	1.65	4 1/8	2 5/8
4x1	2.11	1.65	4 1/8	2 5/8
4x1 1/2	2.11	1.65	4 1/8	2 5/8
4x2	2.11	1.65	4 1/8	2 5/8
4x2 1/2	2.11	1.65	4 1/8	2 5/8
4x3	2.11	1.65	4 1/8	2 5/8
6x4	2.80	2.11	5 5/8	3 3/4

maofei

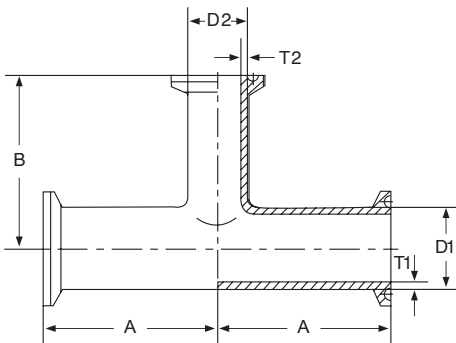


- ◆ Stainless Steel Sanitary Pipe Fitting
- ◆ Valve、Pump、Fluid Facility
- ◆ 不锈钢卫生级管件、阀门、泵、流体设备

### 卡式变径三通 Reducing Tee

BPE | S7RMP

SANITARY PIPE FITTINGS 卫生级管件



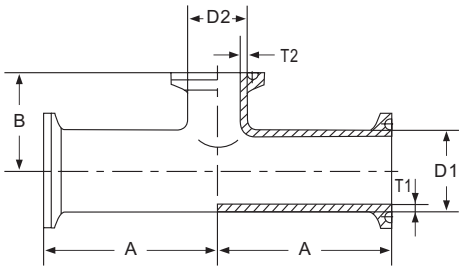
Size(inch)	T1(mm)	T2(mm)	A(inch)	B(inch)
3/4x1/2	1.65	1.65	2 1/2	2 1/2
1x1/2	1.65	1.65	2 5/8	2 5/8
1x3/4	1.65	1.65	2 5/8	2 5/8
1 1/2x1/2	1.65	1.65	2 7/8	2 7/8
1 1/2x3/4	1.65	1.65	2 7/8	2 7/8
1 1/2x1	1.65	1.65	2 7/8	2 7/8
2x1/2	1.65	1.65	3 3/8	3 1/8
2x3/4	1.65	1.65	3 3/8	3 1/8
2x1	1.65	1.65	3 3/8	3 1/8
2x1 1/2	1.65	1.65	3 3/8	3 1/8
2 1/2x1/2	1.65	1.65	3 5/8	3 3/8
2 1/2x3/4	1.65	1.65	3 5/8	3 3/8
2 1/2x1	1.65	1.65	3 5/8	3 3/8
2 1/2x1 1/2	1.65	1.65	3 5/8	3 3/8
2 1/2x2	1.65	1.65	3 5/8	3 3/8
3x1/2	1.65	1.65	3 7/8	3 5/8
3x3/4	1.65	1.65	3 7/8	3 5/8
3x1	1.65	1.65	3 7/8	3 5/8
3x1 1/2	1.65	1.65	3 7/8	3 5/8
3x2	1.65	1.65	3 7/8	3 5/8
3x2 1/2	1.65	1.65	3 7/8	3 5/8
4x1/2	2.11	1.65	4 3/4	4 1/8
4x3/4	2.11	1.65	4 3/4	4 1/8
4x1	2.11	1.65	4 3/4	4 1/8
4x1 1/2	2.11	1.65	4 3/4	4 1/8
4x2	2.11	1.65	4 3/4	4 3/8
4x2 1/2	2.11	1.65	4 3/4	4 3/8
4x3	2.11	1.65	4 3/4	4 3/8
6x4	2.80	2.11	7 1/8	5 3/4



- ◆ Stainless Steel Sanitary Pipe Fitting
- ◆ Valve、Pump、Fluid Facility
- ◆ 不锈钢卫生级管件、阀门、泵、流体设备

### 卡式变径短三通 Short Outlet Reducing Tee

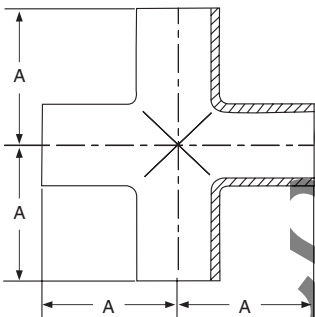
BPE | S7RMPS



Size(inch)	T1(mm)	T2(mm)	A(inch)	B(inch)
3/4x1/2	1.65	1.65	2 1/2	1 1/8
1x1/2	1.65	1.65	2 5/8	1 1/8
1x3/4	1.65	1.65	2 5/8	1 1/8
1 1/2x1/2	1.65	1.65	2 7/8	1 3/8
1 1/2x3/4	1.65	1.65	2 7/8	1 3/8
1 1/2x1	1.65	1.65	2 7/8	1 3/8
2x1/2	1.65	1.65	3 3/8	1 5/8
2x3/4	1.65	1.65	3 3/8	1 5/8
2x1	1.65	1.65	3 3/8	1 5/8
2x1 1/2	1.65	1.65	3 3/8	1 5/8
2 1/2x1/2	1.65	1.65	3 5/8	1 7/8
2 1/2x3/4	1.65	1.65	3 5/8	1 7/8
2 1/2x1	1.65	1.65	3 5/8	1 7/8
2 1/2x1 1/2	1.65	1.65	3 5/8	1 7/8
2 1/2x2	1.65	1.65	3 5/8	1 7/8
3x1/2	1.65	1.65	3 7/8	2 1/8
3x3/4	1.65	1.65	3 7/8	2 1/8
3x1	1.65	1.65	3 7/8	2 1/8
3x1 1/2	1.65	1.65	3 7/8	2 1/8
3x2	1.65	1.65	3 7/8	2 1/8
3x2 1/2	1.65	1.65	3 7/8	2 1/8
4x1/2	2.11	1.65	4 3/4	2 5/8
4x3/4	2.11	1.65	4 3/4	2 5/8
4x1	2.11	1.65	4 3/4	2 5/8
4x1 1/2	2.11	1.65	4 3/4	2 5/8
4x2	2.11	1.65	4 3/4	2 5/8
4x2 1/2	2.11	1.65	4 3/4	2 5/8
4x3	2.11	1.65	4 3/4	2 5/8
6x4	2.80	2.11	7 1/8	3 3/4

### 焊式四通 Cross

BPE | S9WWWW



Size(inch)	T(mm)	A(inch)	B	C
1/2	1.65	1 7/8		
3/4	1.65	2		
1	1.65	2 1/8		
1 1/2	1.65	2 3/8		
2	1.65	2 7/8		
2 1/2	1.65	3 1/8		
3	1.65	3 3/8		
4	2.11	4 1/8		
6	2.8	5 5/8		

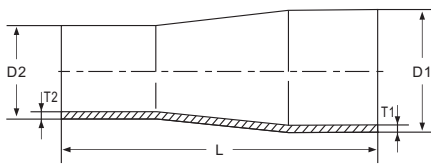




- ◆ Stainless Steel Sanitary Pipe Fitting
- ◆ Valve、Pump、Fluid Facility
- ◆ 不锈钢卫生级管件、阀门、泵、流体设备

焊式同心变径 Concentric Reducer

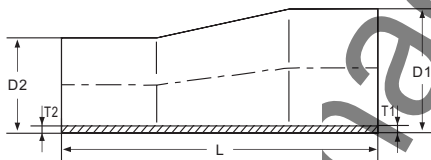
| BPE | S31



Size(inch)	T1(mm)	T2(mm)	L(inch)	B
3/4x1/2	1.65	1.65	4	
1x1/2	1.65	1.65	4 1/2	
1x3/4	1.65	1.65	4 1/2	
1 1/2x1/2	1.65	1.65	5 1/2	
1 1/2x3/4	1.65	1.65	5	
1 1/2x1	1.65	1.65	5	
2x1/2	1.65	1.65	7 3/4	
2x3/4	1.65	1.65	7 1/4	
2x1	1.65	1.65	7 1/4	
2x1 1/2	1.65	1.65	5 1/4	
2 1/2x1/2	1.65	1.65	9 3/4	
2 1/2x3/4	1.65	1.65	9 1/4	
2 1/2x1	1.65	1.65	9 1/4	
2 1/2x1 1/2	1.65	1.65	7 1/4	
2 1/2x2	1.65	1.65	5 1/2	
3x1	1.65	1.65	11 1/4	
3x1 1/2	1.65	1.65	9 1/4	
3x2	1.65	1.65	7 1/2	
3x2 1/2	1.65	1.65	5 1/2	
4x1	2.11	1.65	15 1/2	
4x1 1/2	2.11	1.65	13 1/2	
4x2	2.11	1.65	11 3/4	
4x2 1/2	2.11	1.65	9 3/4	
4x3	2.11	1.65	7 3/4	
6x4	2.8	2.11	10	

焊式偏心变径 Eccentric Reducer

| BPE | S32



Size(inch)	T1(mm)	T2(mm)	L(inch)	B
3/4x1/2	1.65	1.65	4	
1x1/2	1.65	1.65	4 1/2	
1x3/4	1.65	1.65	4 1/2	
1 1/2x1/2	1.65	1.65	5 1/2	
1 1/2x3/4	1.65	1.65	5	
1 1/2x1	1.65	1.65	5	
2x1/2	1.65	1.65	7 3/4	
2x3/4	1.65	1.65	7 1/4	
2x1	1.65	1.65	7 1/4	
2x1 1/2	1.65	1.65	5 1/4	
2 1/2x1/2	1.65	1.65	9 3/4	
2 1/2x3/4	1.65	1.65	9 1/4	
2 1/2x1	1.65	1.65	9 1/4	
2 1/2x1 1/2	1.65	1.65	7 1/4	
2 1/2x2	1.65	1.65	5 1/2	
3x1	1.65	1.65	11 1/4	
3x1 1/2	1.65	1.65	9 1/4	
3x2	1.65	1.65	7 1/2	
3x2 1/2	1.65	1.65	5 1/2	
4x1	2.11	1.65	15 1/2	
4x1 1/2	2.11	1.65	13 1/2	
4x2	2.11	1.65	11 3/4	
4x2 1/2	2.11	1.65	9 3/4	
4x3	2.11	1.65	7 3/4	
6x4	2.8	2.11	10	

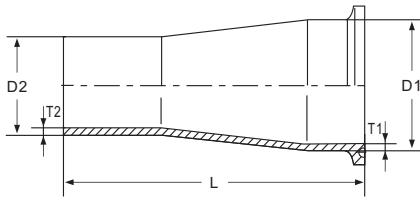


- ◆ Stainless Steel Sanitary Pipe Fitting
- ◆ Valve、Pump、Fluid Facility
- ◆ 不锈钢卫生级管件、阀门、泵、流体设备

一卡一焊式同心变径 Concentric Reducer/Ferrule Large end

BPE | S31K

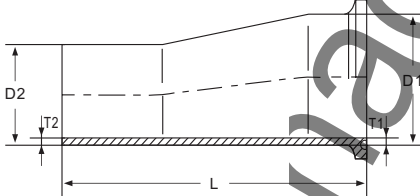
SANITARY PIPE FITTINGS 卫生级管件



Size(inch)	T1(mm)	T2(mm)	L(inch)	B
3/4x1/2	1.65	1.65	3	
1x1/2	1.65	1.65	3 1/2	
1x3/4	1.65	1.65	3	
1 1/2x1/2	1.65	1.65	4 1/2	
1 1/2x3/4	1.65	1.65	4	
1 1/2x1	1.65	1.65	4	
2x1/2	1.65	1.65	6 1/2	
2x3/4	1.65	1.65	6	
2x1	1.65	1.65	6	
2x1 1/2	1.65	1.65	4	
2 1/2x1/2	1.65	1.65	8 1/2	
2 1/2x3/4	1.65	1.65	8	
2 1/2x1	1.65	1.65	8	
2 1/2x1 1/2	1.65	1.65	6	
2 1/2x2	1.65	1.65	4 1/4	
3x1	1.65	1.65	10	
3x1 1/2	1.65	1.65	8	
3x2	1.65	1.65	6 1/4	
3x2 1/2	1.65	1.65	4 1/4	
4x1	2.11	1.65	14 1/8	
4x1 1/2	2.11	1.65	12 1/8	
4x2	2.11	1.65	10 3/8	
4x2 1/2	2.11	1.65	8 3/8	
4x3	2.11	1.65	6 3/8	
6x4	2.8	2.11	9	

一卡一焊式偏心变径 Eccentric Reducer/Ferrule Large end

BPE | S32K



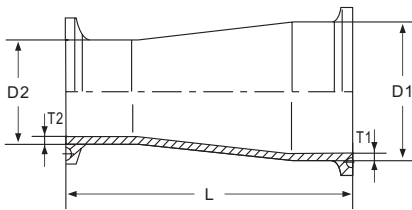
Size(inch)	T1(mm)	T2(mm)	L(inch)	B
3/4x1/2	1.65	1.65	3	
1x1/2	1.65	1.65	3 1/2	
1x3/4	1.65	1.65	3	
1 1/2x1/2	1.65	1.65	4 1/2	
1 1/2x3/4	1.65	1.65	4	
1 1/2x1	1.65	1.65	4	
2x1/2	1.65	1.65	6 1/2	
2x3/4	1.65	1.65	6	
2x1	1.65	1.65	6	
2x1 1/2	1.65	1.65	4	
2 1/2x1/2	1.65	1.65	8 1/2	
2 1/2x3/4	1.65	1.65	8	
2 1/2x1	1.65	1.65	8	
2 1/2x1 1/2	1.65	1.65	6	
2 1/2x2	1.65	1.65	4 1/4	
3x1	1.65	1.65	10	
3x1 1/2	1.65	1.65	8	
3x2	1.65	1.65	6 1/4	
3x2 1/2	1.65	1.65	4 1/4	
4x1	2.11	1.65	14 1/8	
4x1 1/2	2.11	1.65	12 1/8	
4x2	2.11	1.65	10 3/8	
4x2 1/2	2.11	1.65	8 3/8	
4x3	2.11	1.65	6 3/8	
6x4	2.8	2.11	9	



- ◆ Stainless Steel Sanitary Pipe Fitting
- ◆ Valve、Pump、Fluid Facility
- ◆ 不锈钢卫生级管件、阀门、泵、流体设备

卡式同心变径 Concentric Reducer

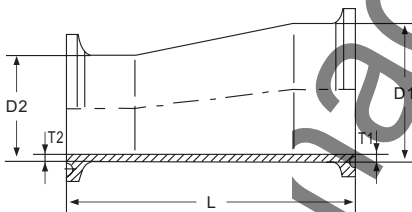
BPE | S31-14MP



Size(inch)	T1(mm)	T2(mm)	L(inch)	B
3/4x1/2	1.65	1.65	2	
1x1/2	1.65	1.65	2 1/2	
1x3/4	1.65	1.65	2	
1 1/2x1/2	1.65	1.65	3 1/2	
1 1/2x3/4	1.65	1.65	3	
1 1/2x1	1.65	1.65	3	
2x1/2	1.65	1.65	5 1/2	
2x3/4	1.65	1.65	5	
2x1	1.65	1.65	5	
2x1 1/2	1.65	1.65	3	
2 1/2x1/2	1.65	1.65	7 1/2	
2 1/2x3/4	1.65	1.65	7	
2 1/2x1	1.65	1.65	7	
2 1/2x1 1/2	1.65	1.65	5	
2 1/2x2	1.65	1.65	3	
3x1	1.65	1.65	9	
3x1 1/2	1.65	1.65	7	
3x2	1.65	1.65	5	
3x2 1/2	1.65	1.65	3	
4x1	2.11	1.65	13 1/8	
4x1 1/2	2.11	1.65	11 1/8	
4x2	2.11	1.65	9 1/8	
4x2 1/2	2.11	1.65	7 1/8	
4x3	2.11	1.65	5 1/8	
6x4	2.8	2.11	7 5/8	

卡式偏心变径 Eccentric Reducer

BPE | S32-14MP



Size(inch)	T1(mm)	T2(mm)	L(inch)	B
3/4x1/2	1.65	1.65	2	
1x1/2	1.65	1.65	2 1/2	
1x3/4	1.65	1.65	2	
1 1/2x1/2	1.65	1.65	3 1/2	
1 1/2x3/4	1.65	1.65	3	
1 1/2x1	1.65	1.65	3	
2x1/2	1.65	1.65	5 1/2	
2x3/4	1.65	1.65	5	
2x1	1.65	1.65	5	
2x1 1/2	1.65	1.65	3	
2 1/2x1/2	1.65	1.65	7 1/2	
2 1/2x3/4	1.65	1.65	7	
2 1/2x1	1.65	1.65	7	
2 1/2x1 1/2	1.65	1.65	5	
2 1/2x2	1.65	1.65	3	
3x1	1.65	1.65	9	
3x1 1/2	1.65	1.65	7	
3x2	1.65	1.65	5	
3x2 1/2	1.65	1.65	3	
4x1	2.11	1.65	13 1/8	
4x1 1/2	2.11	1.65	11 1/8	
4x2	2.11	1.65	9 1/8	
4x2 1/2	2.11	1.65	7 1/8	
4x3	2.11	1.65	5 1/8	
6x4	2.8	2.11	7 5/8	